



QUESTION 2: SOLID GEOMETRY

Given:

- The front view and top view of a right regular pentagonal pyramid with one base edge in contact with a base edge of a right regular hexagonal prism. The prism is centrally pierced by a right square prismatic hole.
- Cutting plane P-P, that cuts both solids

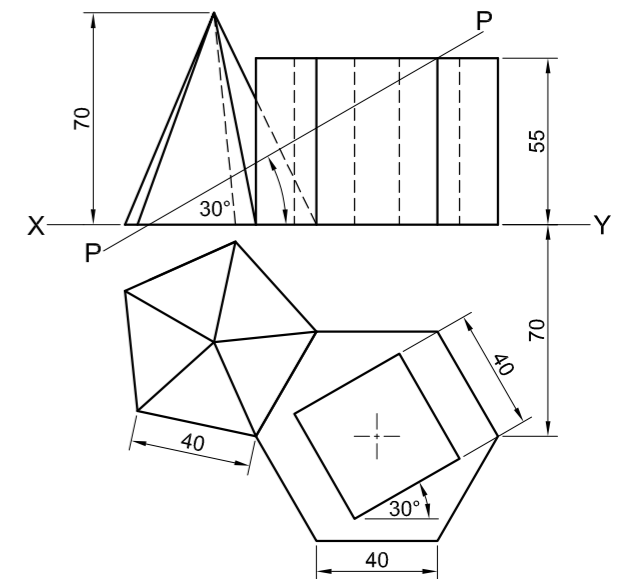
Instructions:

Draw, to scale 1 : 1, the following views of both solids:

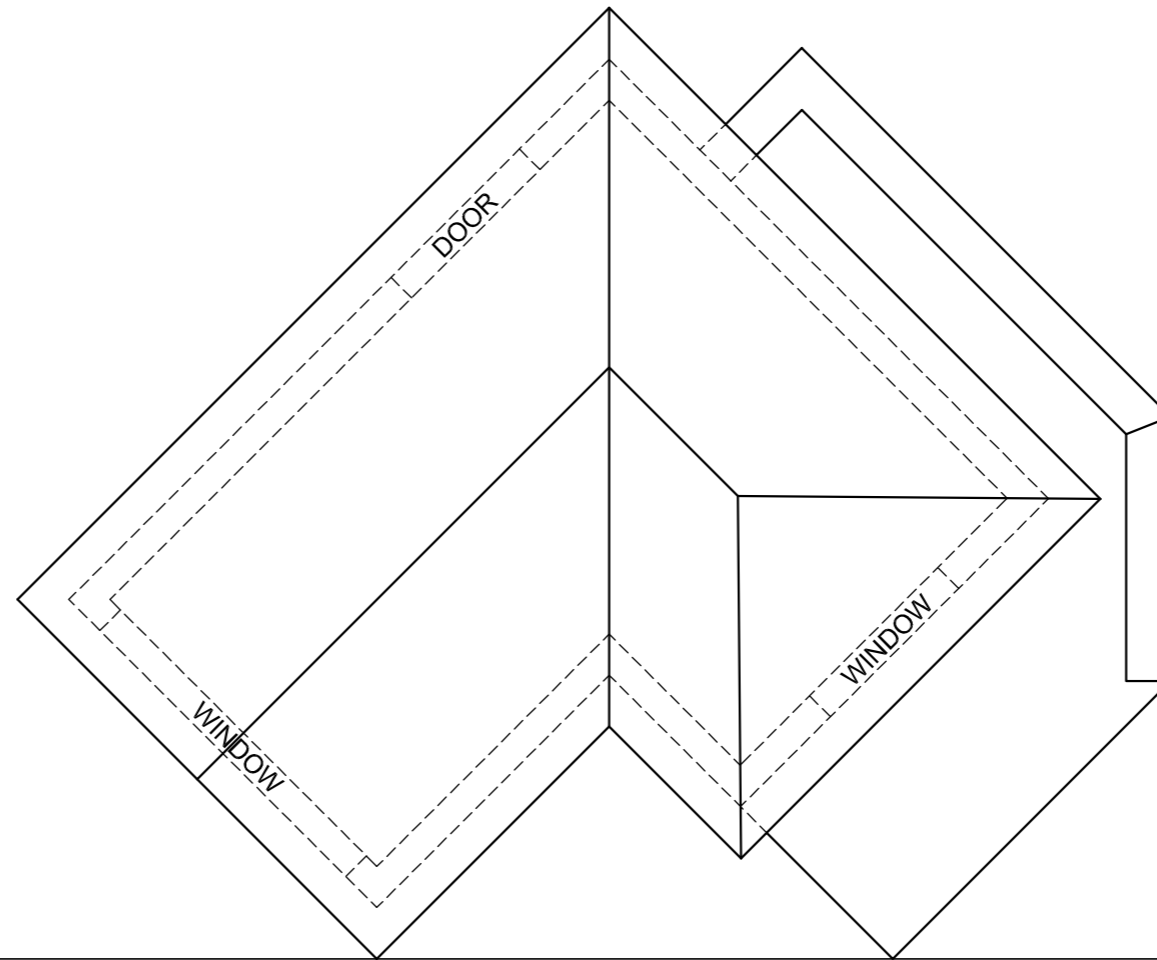
- 2.1 The given front view
- 2.2 A sectional top view
- 2.3 A sectional left view

- Planning is essential.
- Show ALL hidden detail.
- Show ALL construction.

[38]



ASSESSMENT CRITERIA			
1	SECTIONAL TOP VIEW	15 1/2	
2	FRONT VIEW	8 1/2	
3	SECTIONAL LEFT VIEW	14	
PENALTIES (-)			
TOTAL		38	
EXAMINATION NUMBER			
EXAMINATION NUMBER			
			3



QUESTION 3: PERSPECTIVE

Given:

Three views of a house and the information needed to draw a two-point perspective drawing
 PP – Picture plane
 HL – Horizon line
 GL – Ground line
 SP – Station point

Instructions:

Complete the perspective drawing.

- Align the drawing sheet with the ground line (GL).
- Determine and label the vanishing points.
- Show ALL construction.
- Show the depth at the windows.
- No hidden detail or internal detail is required.

[40]

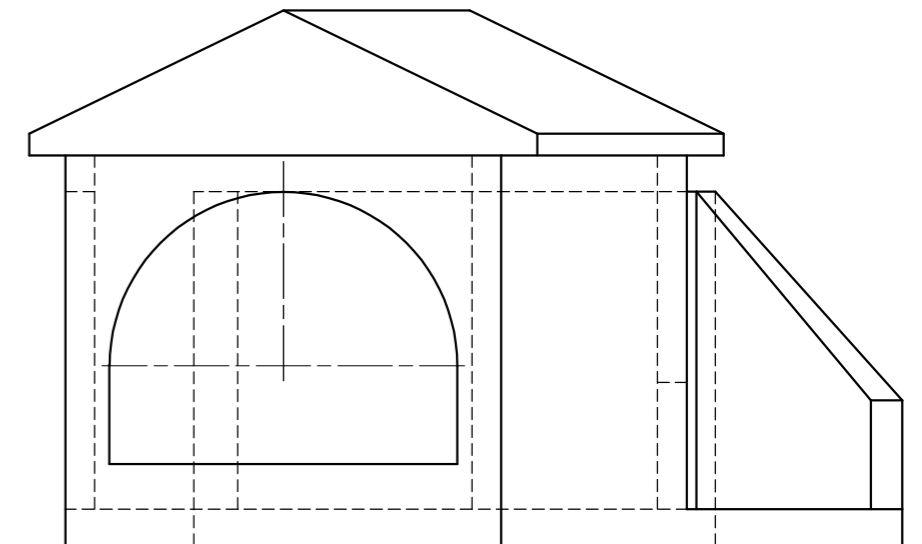
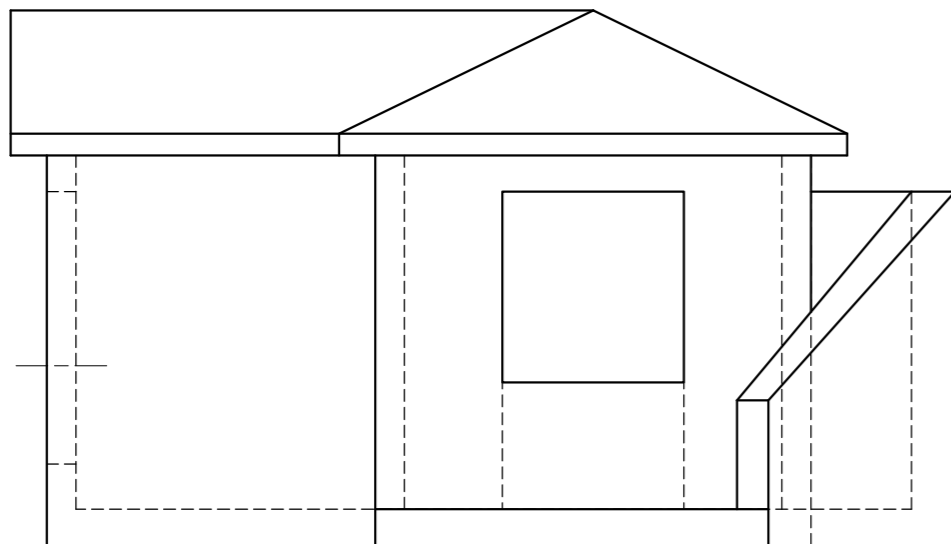
ASSESSMENT CRITERIA				
1	CONSTRUCTION	6		
2	STOEP + WALLS	12 ½		
3	ARCH + CONSTR	8 ½		
4	WINDOW	3 ½		
5	ROOF	9 ½		
PENALTIES (-)				
TOTAL		40		

PP

HL

GL

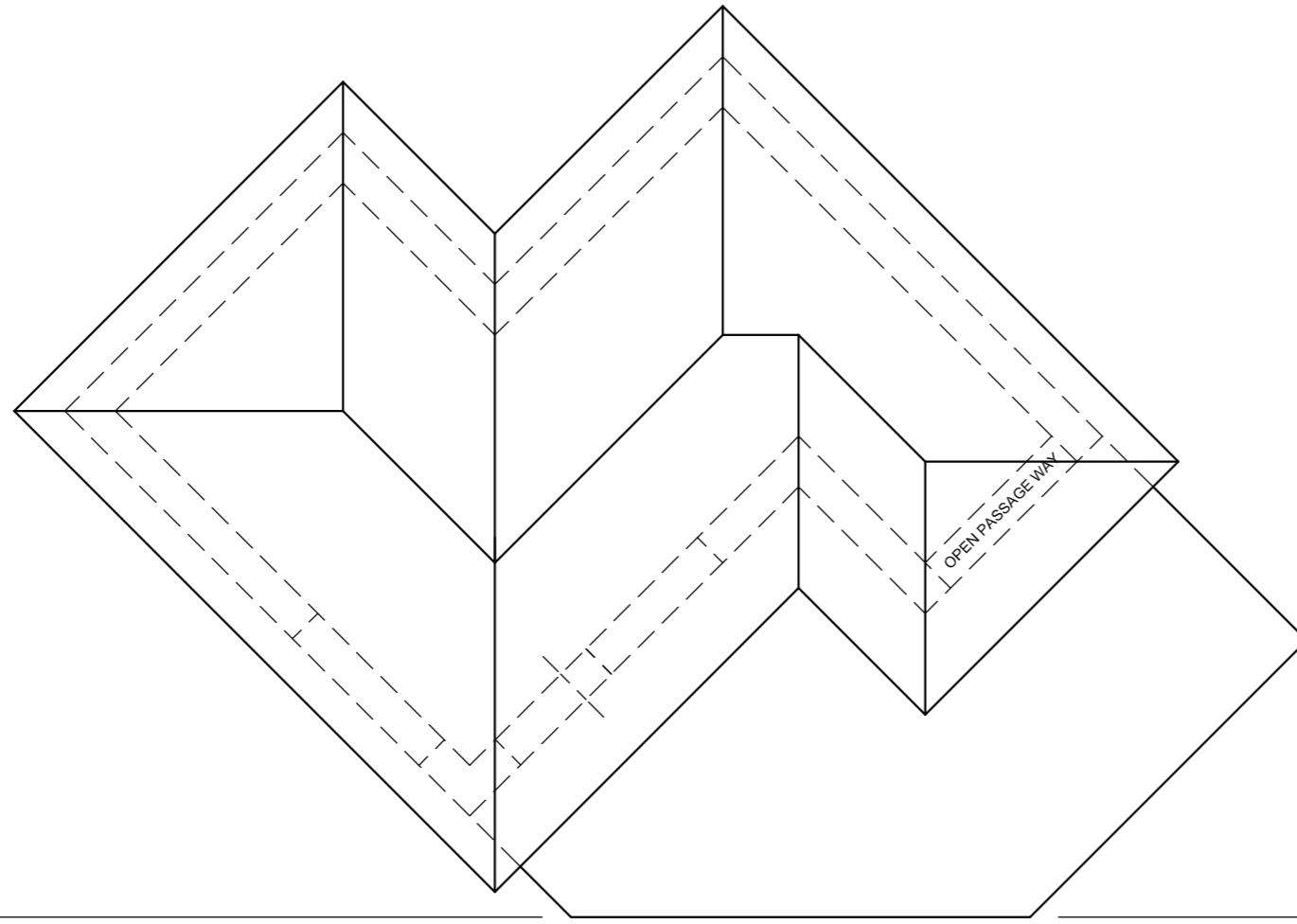
HL



SP

EXAMINATION NUMBER	
EXAMINATION NUMBER	4

STAPLE



QUESTION 3: PERSPECTIVE

Given:

Three views of a club house and the information needed to draw a two-point perspective drawing
 PP – Picture plane
 HL – Horizon line
 GL – Ground line
 SP – Station point

Instructions:

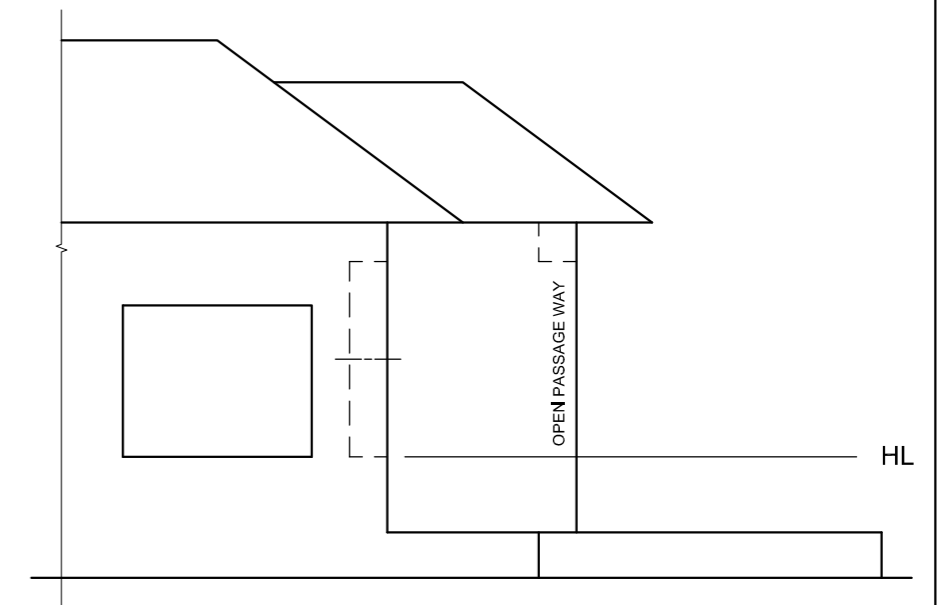
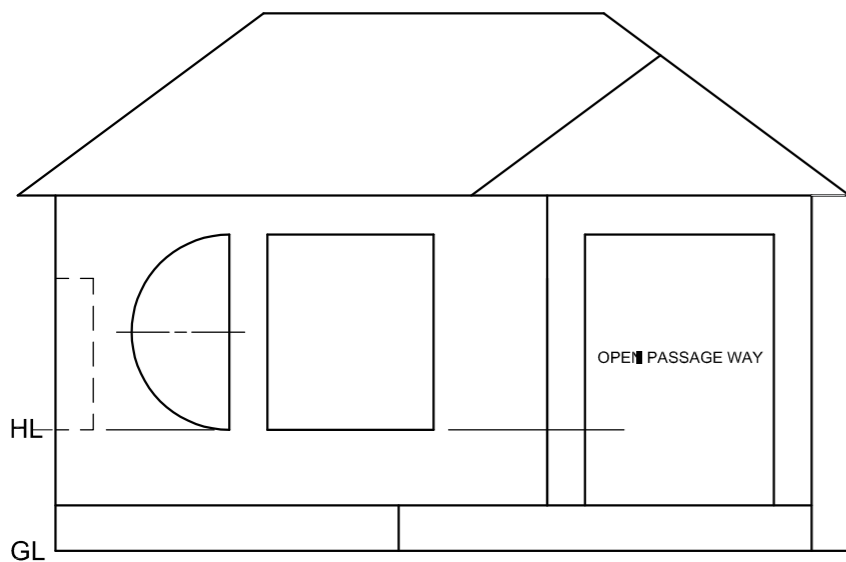
Complete the perspective drawing.

- Align the drawing sheet with the ground line (GL).
- Determine and label the vanishing points.
- Show ALL construction.
- Show depth at the windows.
- NO hidden detail is required.

[41]

ASSESSMENT CRITERIA				
1	CONSTRUCTION	6		
2	WALL + BASE	10 1/2		
3	WINDOWS + OPENING	10		
4	ROOF	7 1/2		
5	ARC	7		
PENALTIES (-)				
TOTAL		41		

PP



SP

EXAMINATION NUMBER	
EXAMINATION NUMBER	4



QUESTION 3: PERSPECTIVE

Given:

Three views of a dwelling and the information needed to draw a two-point perspective drawing

PP – Picture plane

HL – Horizon line

GL – Ground line

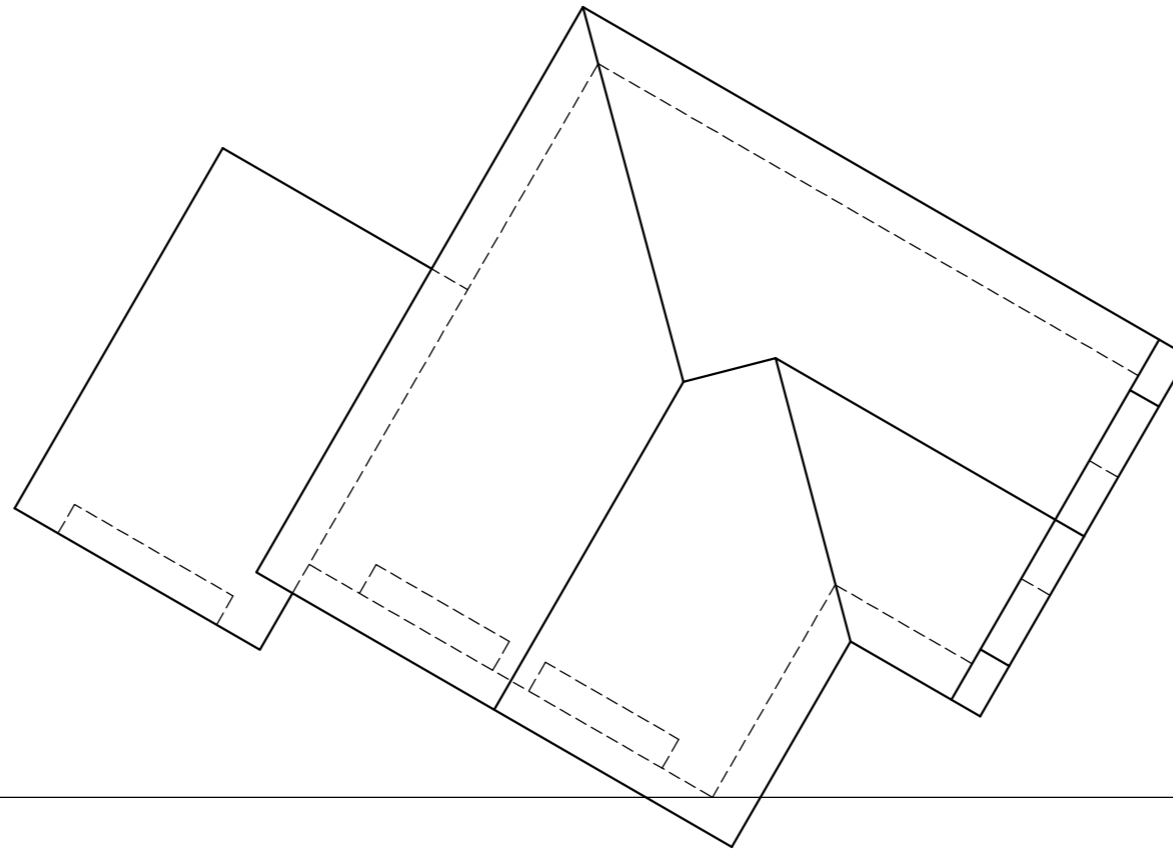
SP – Station point

Instructions:

Complete the perspective drawing.

- Align the drawing sheet with the ground line (GL).
- Determine and label the vanishing points.
- Show ALL construction.
- Show depth at the doors and windows.
- NO hidden detail or interior detail is required.

[38]



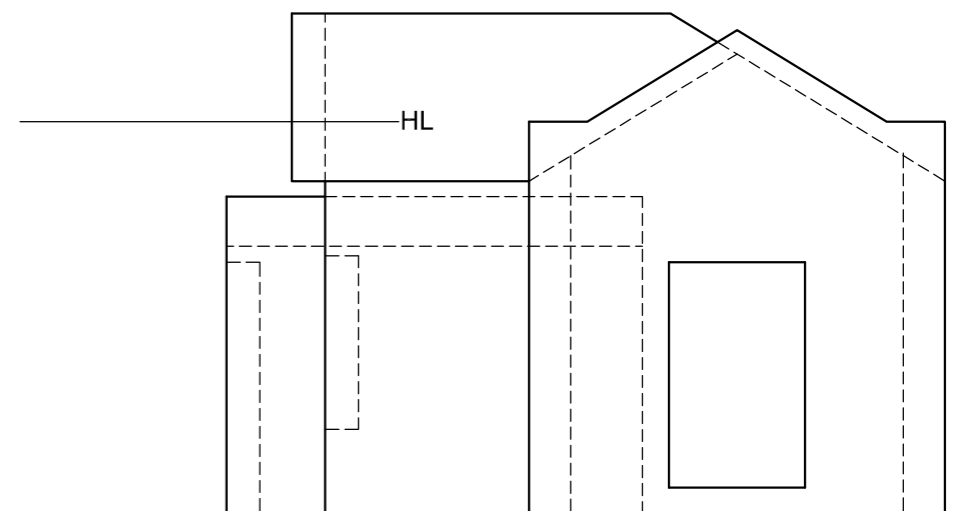
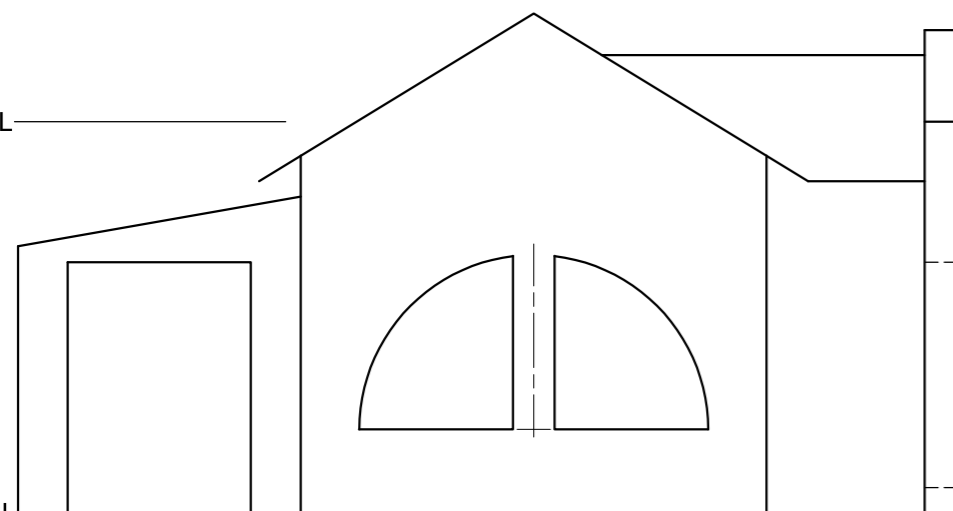
PP

HL

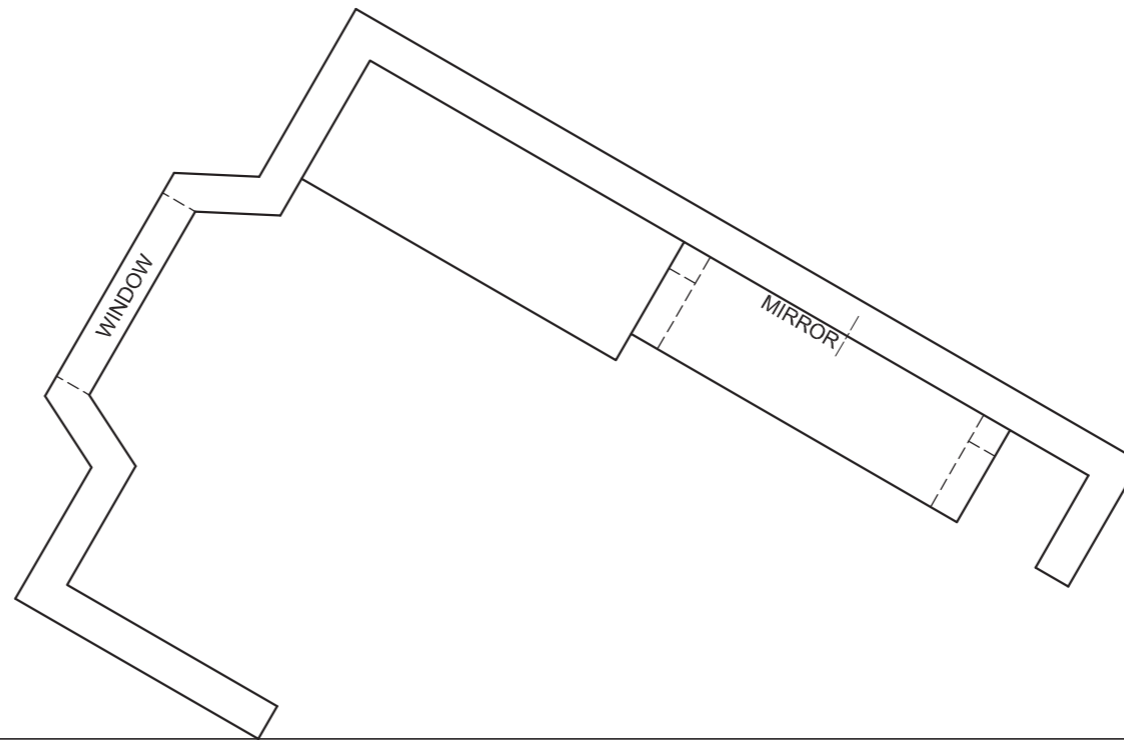
GL

SP

ASSESSMENT CRITERIA				
1	CONSTRUCTION	6		
2	WALLS	11 1/2		
3	ROOF	5		
4	WINDOWS	10		
5	GARAGE	5 1/2		
PENALTIES (-)				
TOTAL		38		



EXAMINATION NUMBER	
EXAMINATION NUMBER	4



QUESTION 3: PERSPECTIVE

Given:

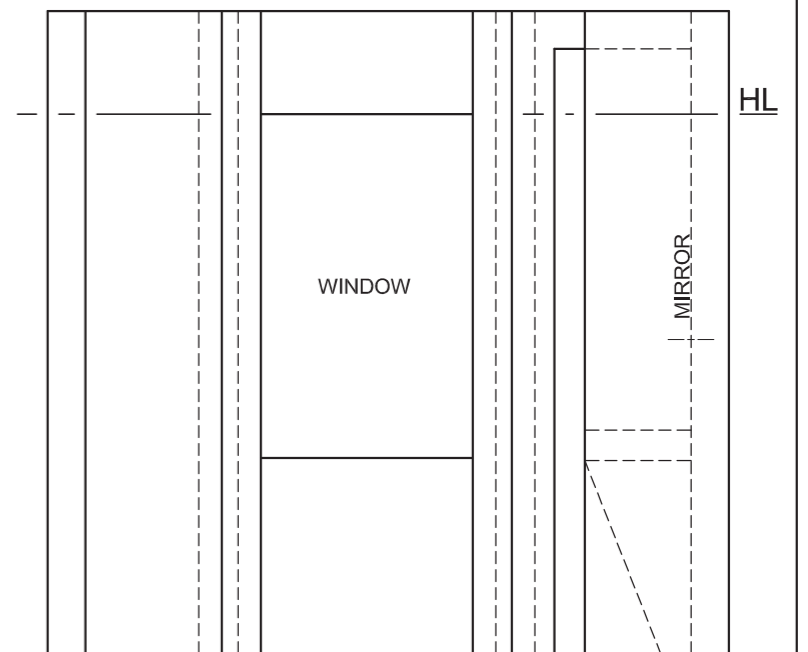
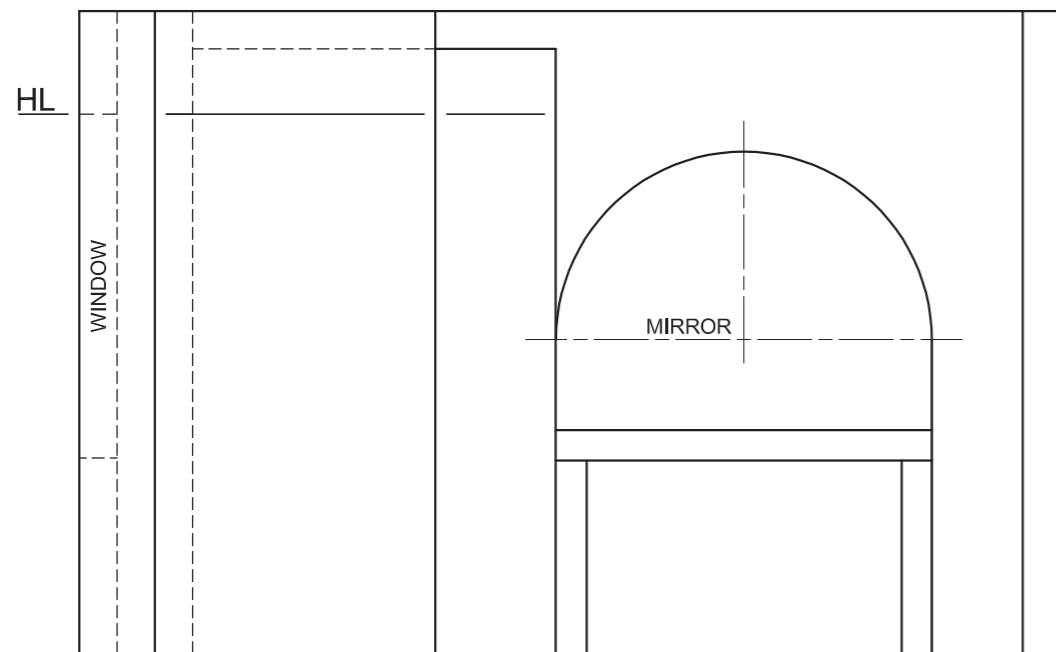
Three views of the inside of a dressing room and the information needed to draw a two-point perspective drawing
 PP – Picture plane
 HL – Horizon line
 GL – Ground line
 SP – Station point

Instructions:

Complete the perspective drawing.

- Align the drawing sheet with the ground line (GL).
- Determine and label the vanishing points.
- Show ALL construction.
- NO hidden detail is required. **[40]**

PP

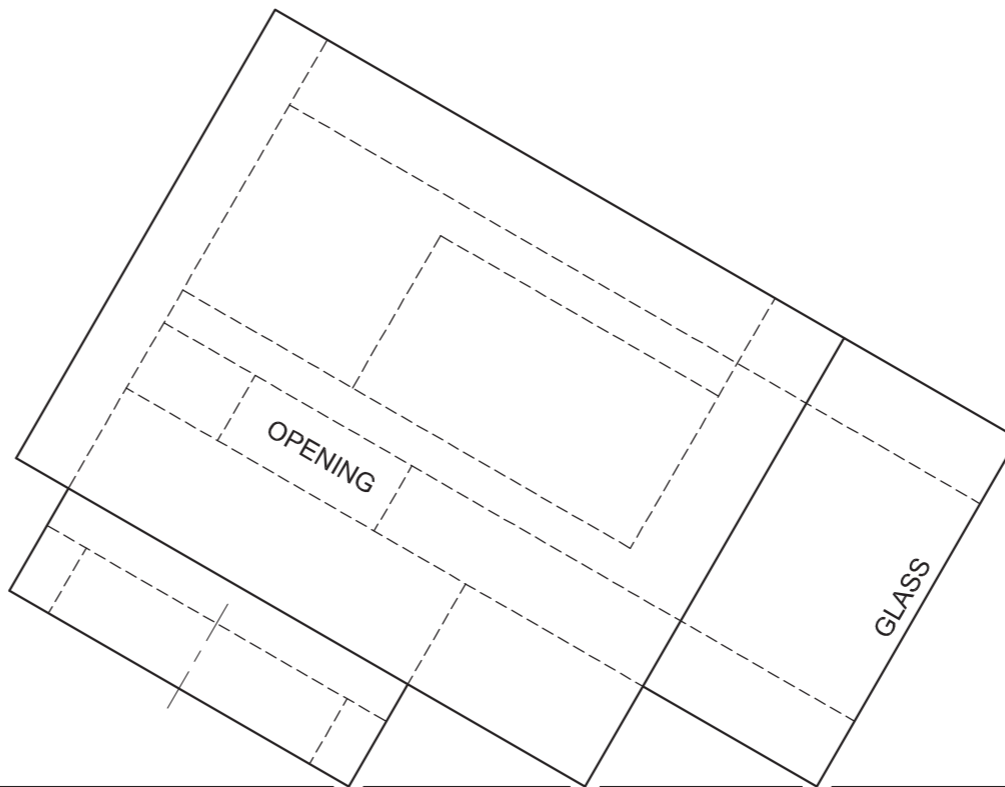


+

SP

ASSESSMENT CRITERIA			
1	CONSTRUCTION	6	
2	WALLS + CUPBOARD + WINDOW	20	
3	TABLE + MIRROR	14	
PENALTIES (-)			
TOTAL		40	
EXAMINATION NUMBER			
EXAMINATION NUMBER			4





QUESTION 3: PERSPECTIVE

Given:

Three views of a modern exhibition centre and the information needed to draw a two-point perspective drawing
 PP – Picture plane
 HL – Horizon line
 GL – Ground line
 SP – Station point

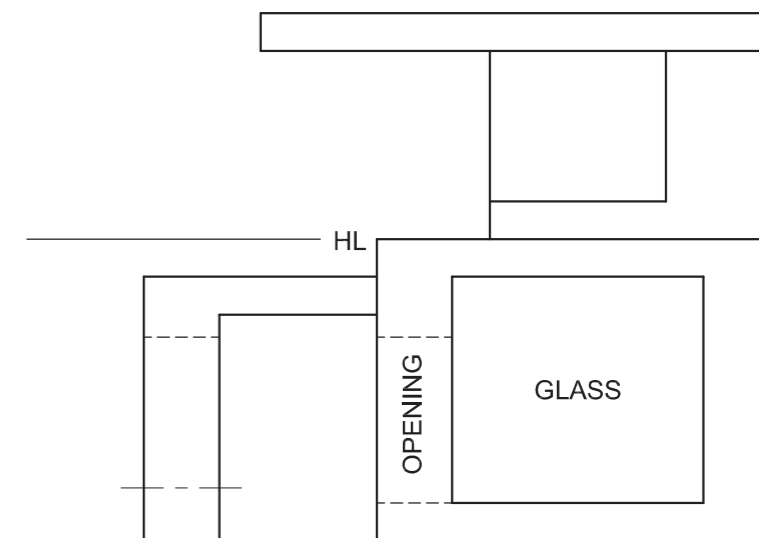
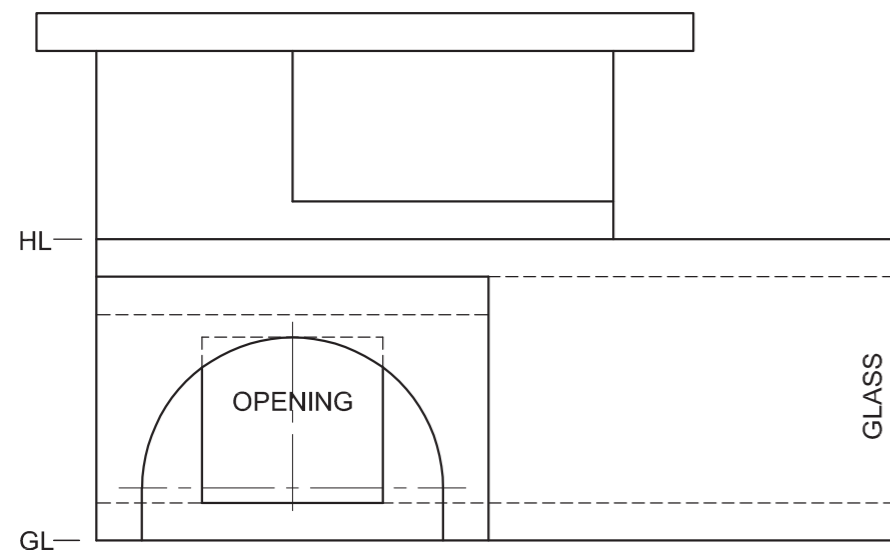
Instructions:

Complete the perspective drawing.

- Align the drawing sheet with the ground line (GL).
- Determine and label the vanishing points.
- Show ALL construction.
- Show ALL visible internal detail as seen through the opening and the glass.
- NO hidden detail is required. **[39]**

ASSESSMENT CRITERIA			
1	CONSTRUCTION	6	
2	LOWER SECTION	15	
3	UPPER SECTION	6	
4	ROOF	4 1/2	
5	ARC	7 1/2	
PENALTIES (-)			
TOTAL		39	

PP



SP

EXAMINATION NUMBER	
EXAMINATION NUMBER	4





QUESTION 3: PERSPECTIVE

Given:

Three views of a building and the information needed to draw a two-point perspective drawing

PP – Picture plane

HL – Horizon line

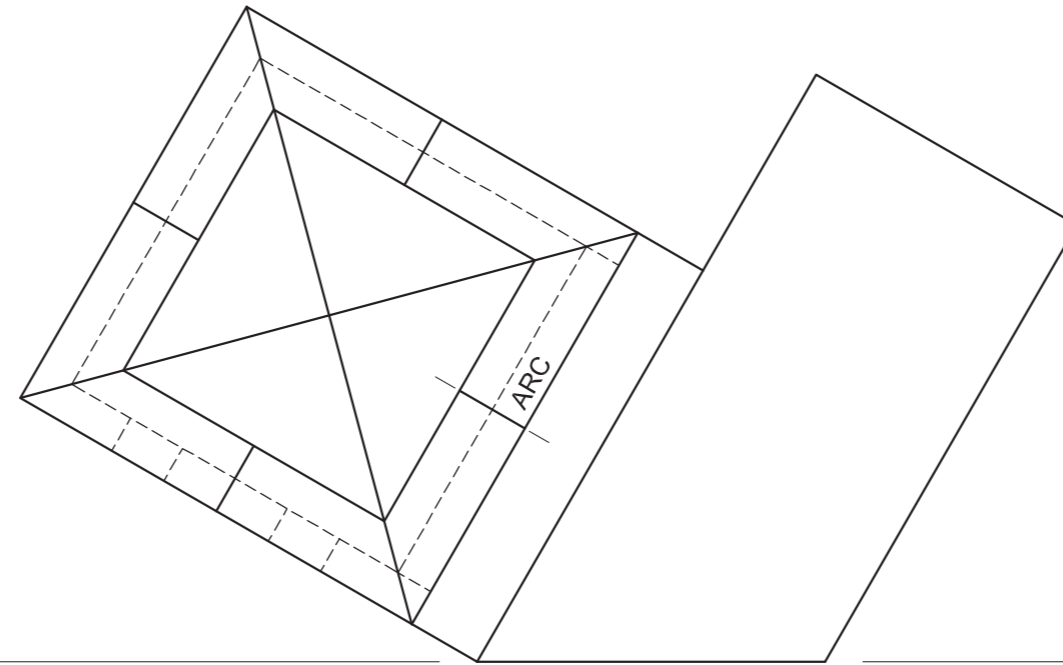
GL – Ground line

SP – Station point

Instructions:

Complete the perspective drawing.

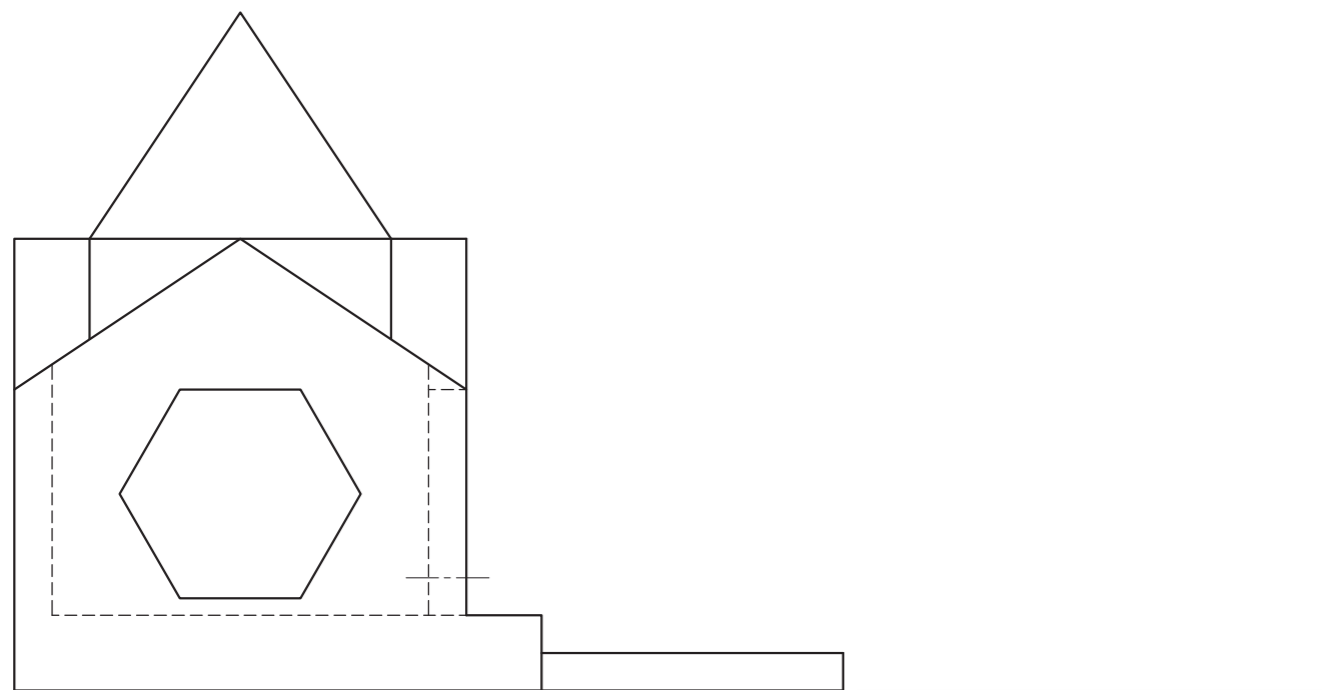
- Align the drawing sheet with the ground line (GL).
- Determine and label the vanishing points.
- Show ALL construction.
- Show internal lines seen through the hexagonal and arc openings.
- NO hidden detail is required. **[38]**



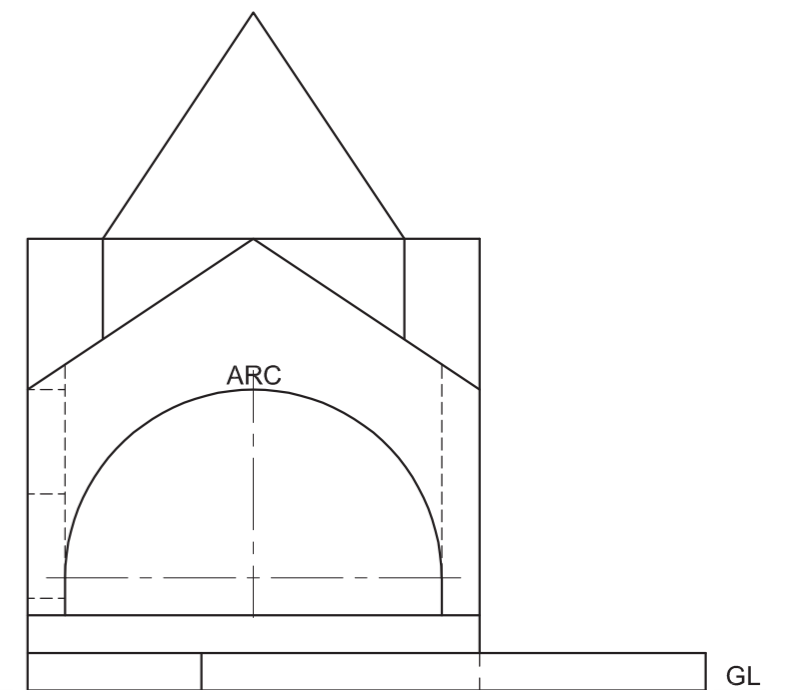
PP

HL

ASSESSMENT CRITERIA				
1	CONSTRUCTION	6		
2	WALLS	10½		
3	HEXAGONAL OPENING	5½		
4	ROOF	9½		
5	ARC	6½		
PENALTIES (-)				
TOTAL		38		

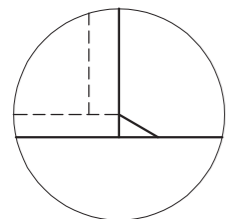
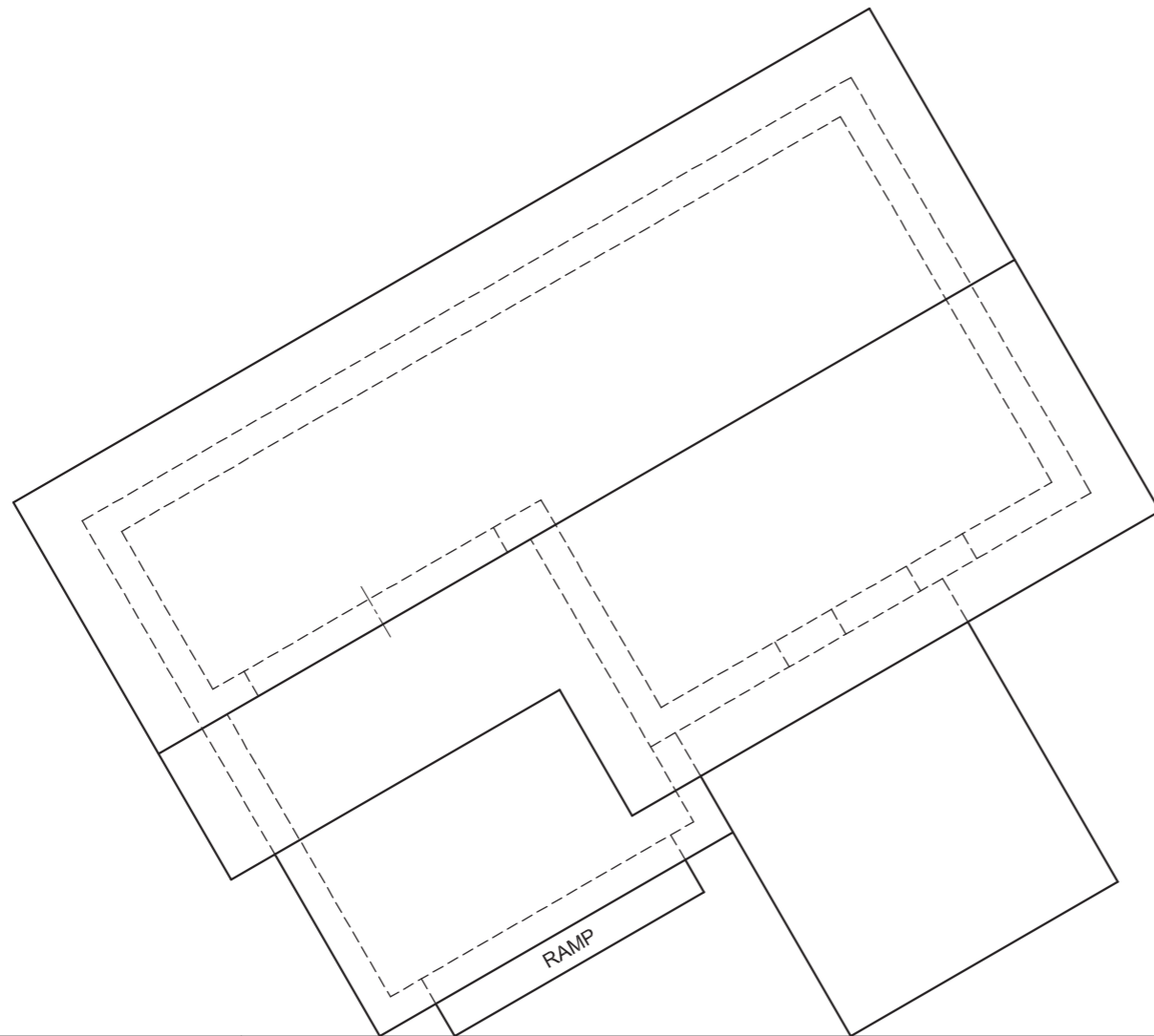


SP



EXAMINATION NUMBER	
EXAMINATION NUMBER	4





DETAIL OF RAMP

PP

QUESTION 3: PERSPECTIVE

Given:

Two views of a house with a pitched roof, the detail of the ramp and the information needed to draw a two-point perspective drawing

PP – Picture plane

HL – Horizon line

GL – Ground line

SP – Station point

Instructions:

Complete the perspective drawing.

- Align the drawing sheet with the ground line (GL).
- Determine and label the vanishing points.
- Show ALL construction.
- NO interior detail is required.
- NO hidden detail is required.

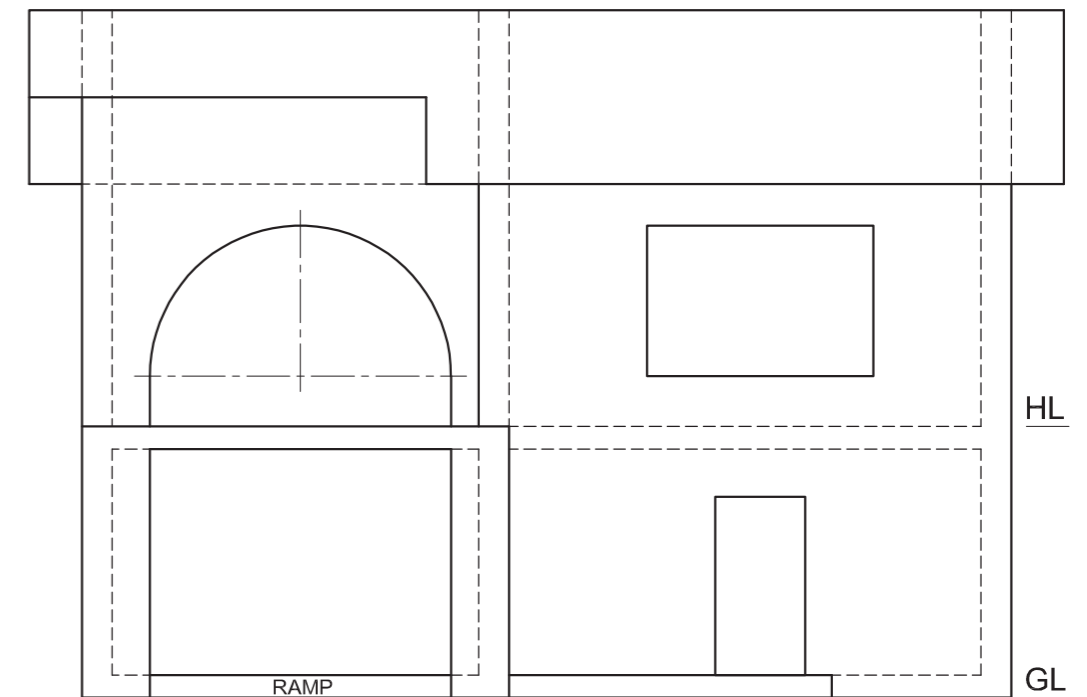
[39]

ASSESSMENT CRITERIA				
1	CONSTRUCTION	6		
2	WALLS	13		
3	DOORS + WINDOWS	8½		
4	ROOF	4½		
5	ARCS	7		
PENALTIES (-)				
TOTAL		39		

HL

GL

SP

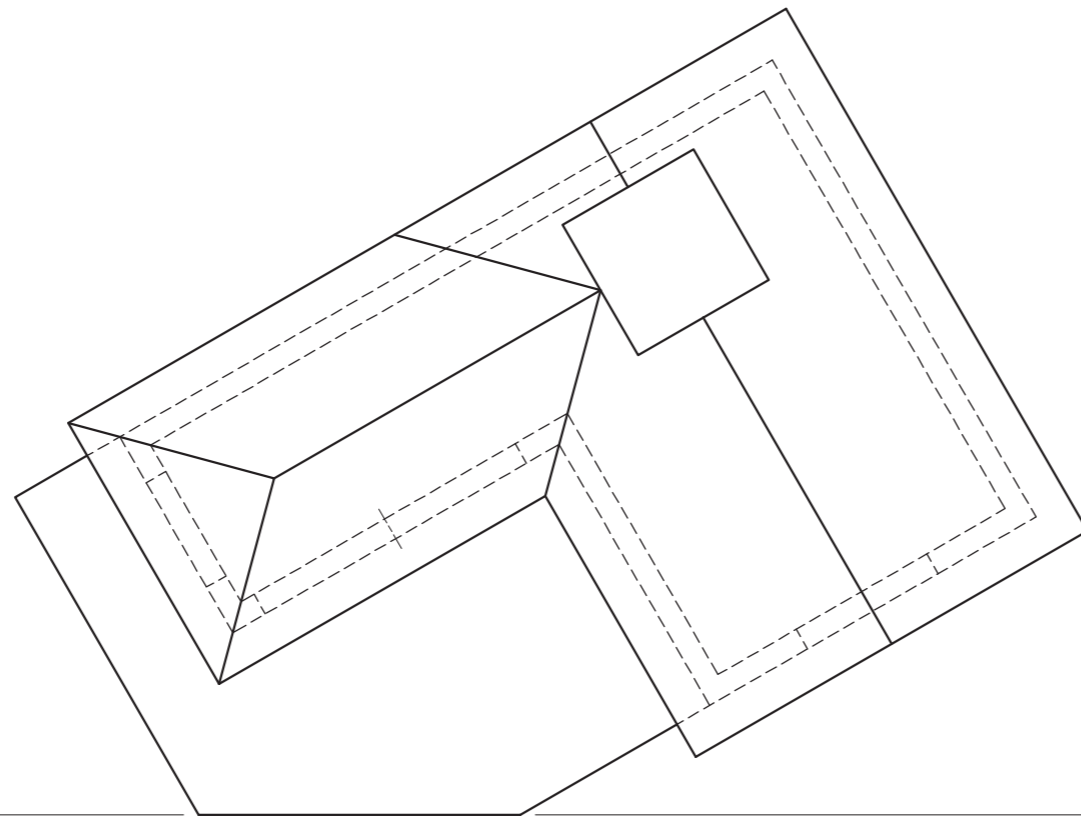


EXAMINATION NUMBER

EXAMINATION NUMBER

4





QUESTION 3: PERSPECTIVE

Given:

Three views of a building and the information needed to draw a two-point perspective drawing

PP – Picture plane

HL – Horizon line

GL – Ground line

SP – Station point

Instructions:

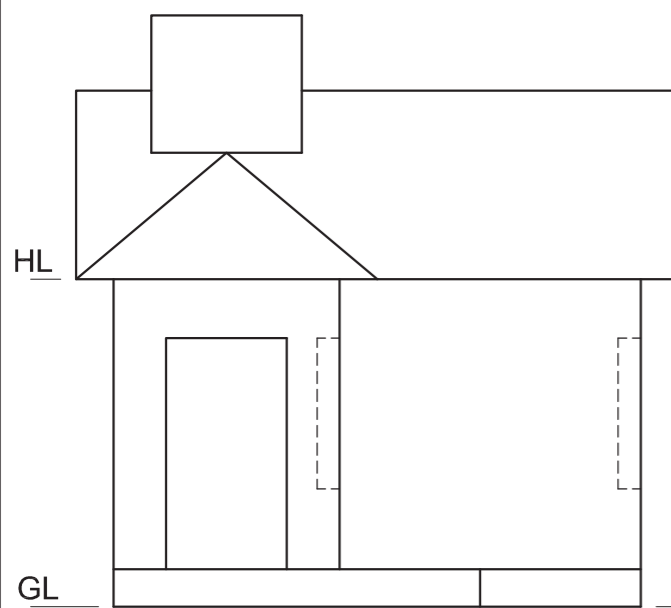
Complete the perspective drawing.

- Align the drawing sheet with the ground line (GL).
- Determine and label the vanishing points.
- Show ALL construction.
- NO interior detail is required.
- NO hidden detail is required.

[38]

ASSESSMENT CRITERIA				
1	CONSTRUCTION	6		
2	FLOOR AND WALLS	10		
3	DOOR AND WINDOWS	13 ½		
4	ROOF	8 ½		
PENALTIES (-)				
TOTAL		38		

PP

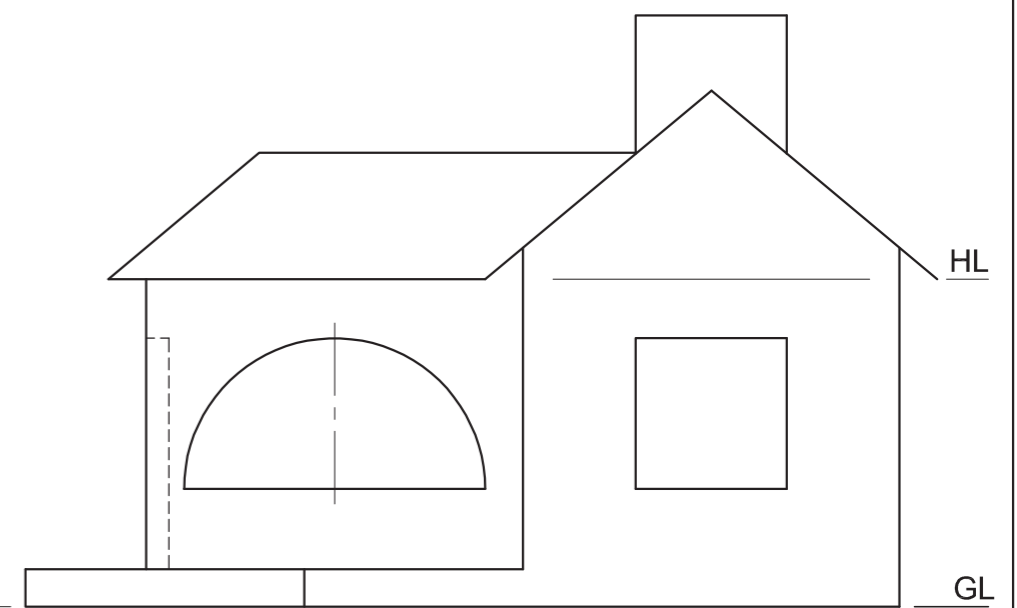


HL

GL

+

SP

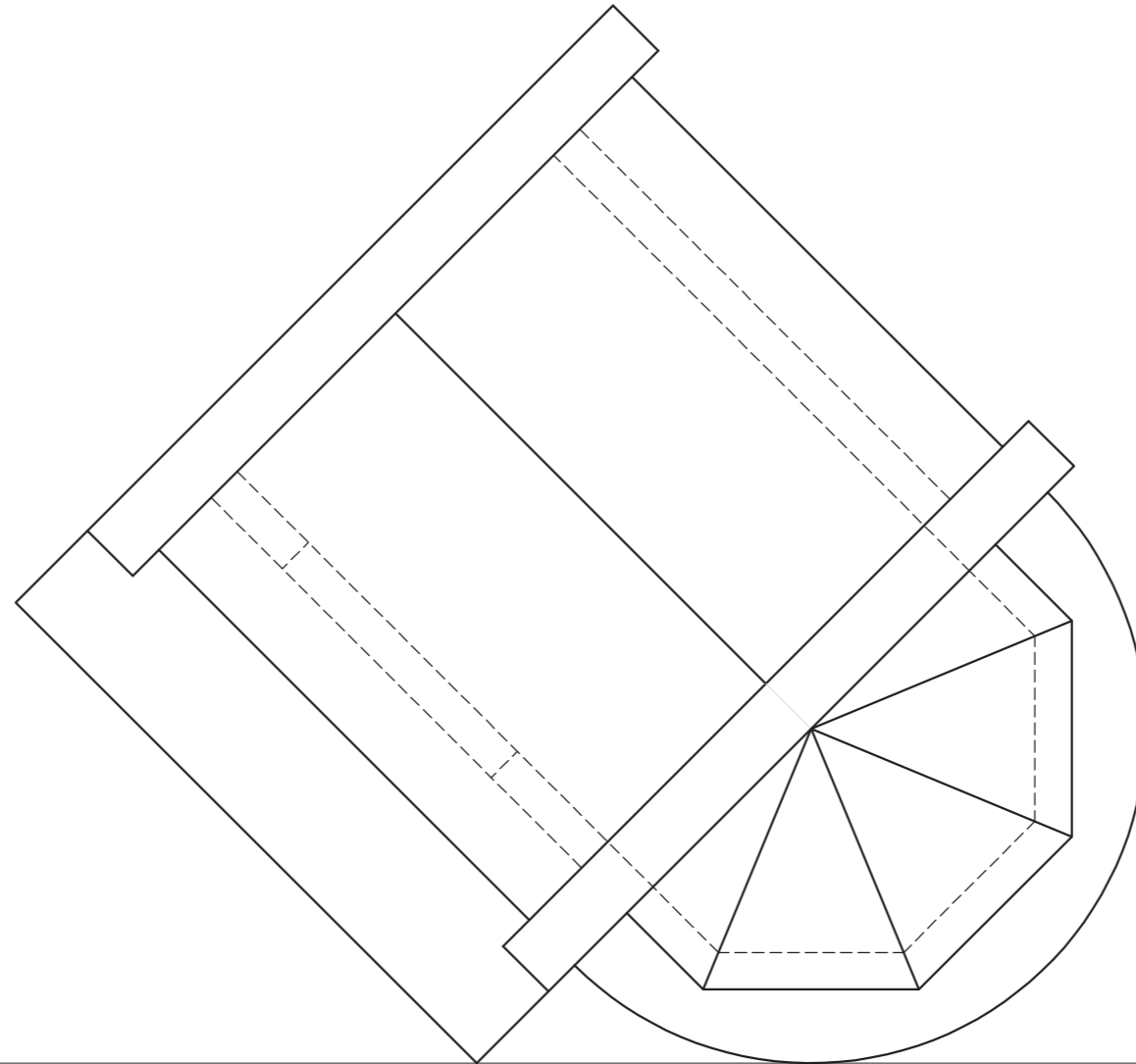


HL

GL

EXAMINATION NUMBER	
EXAMINATION NUMBER	4





QUESTION 3: PERSPECTIVE

Given:

Two complete views and a partial view of a function hall and the information needed to draw a two-point perspective drawing

PP – Picture plane

HL – Horizon line

GL – Ground line

SP – Station point

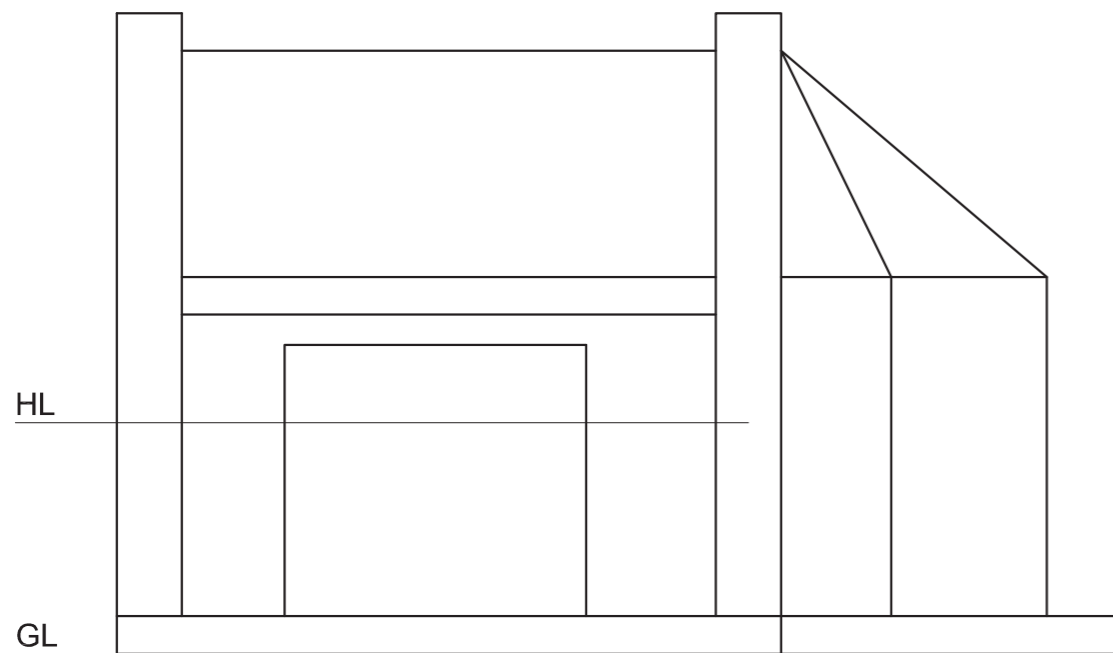
Instructions:

Complete the perspective drawing.

- Align the drawing sheet with the ground line (GL).
- Determine and label the vanishing points.
- Show internal lines seen through the doorway.
- Show ALL construction.
- NO hidden detail is required. [37]

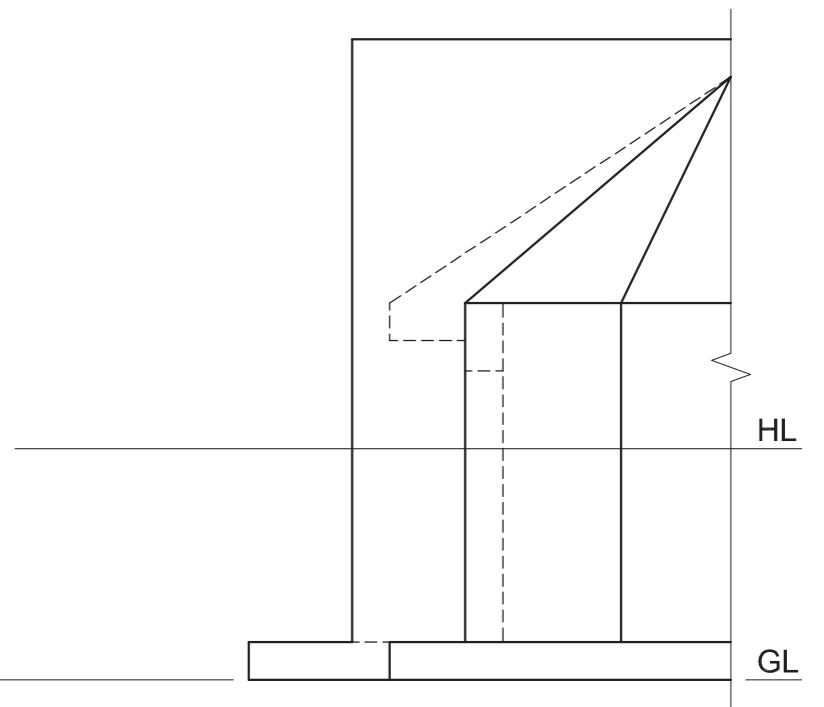
ASSESSMENT CRITERIA				
1	CONSTRUCTION	6		
2	OUTER STRUCTURE	9 ½		
3	INNER STRUCTURE	8		
4	SIDE STRUCTURE	7		
5	ARCS	6 ½		
PENALTIES (-)				
TOTAL		37		

PP



HL

GL

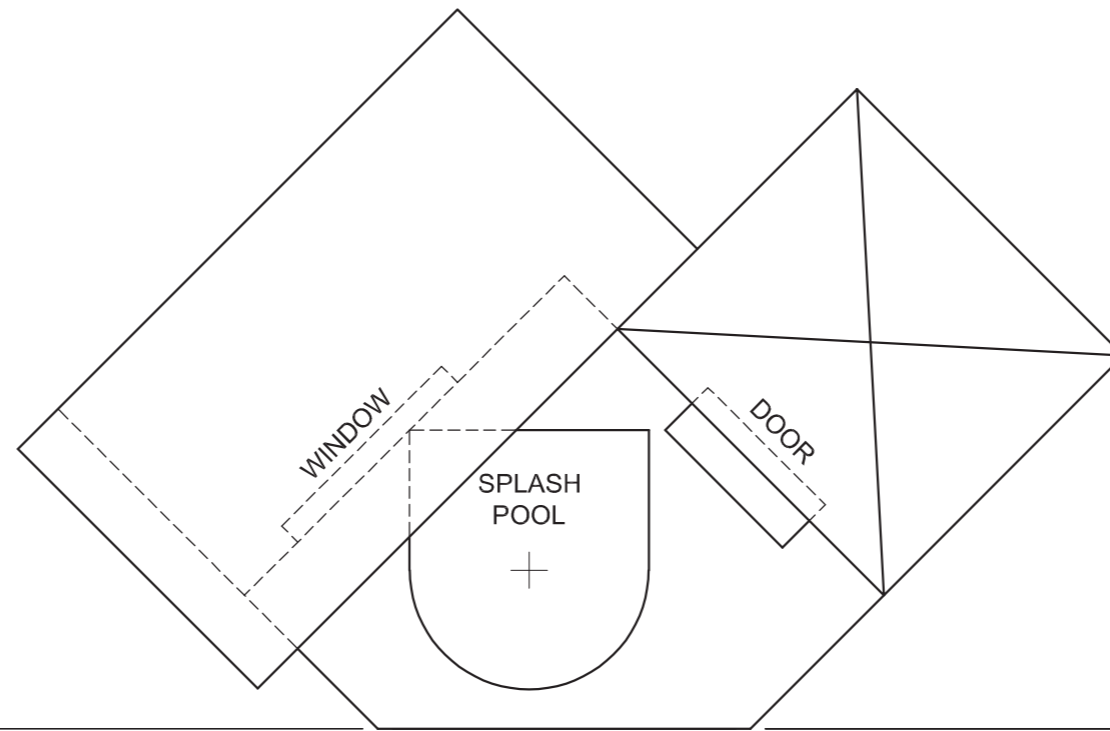


HL

GL



EXAMINATION NUMBER	
EXAMINATION NUMBER	4



QUESTION 3: PERSPECTIVE

Given:

Two views of a structure and the information needed to draw a two-point perspective drawing
 PP – Picture plane
 HL – Horizon line
 GL – Ground line
 SP – Station point

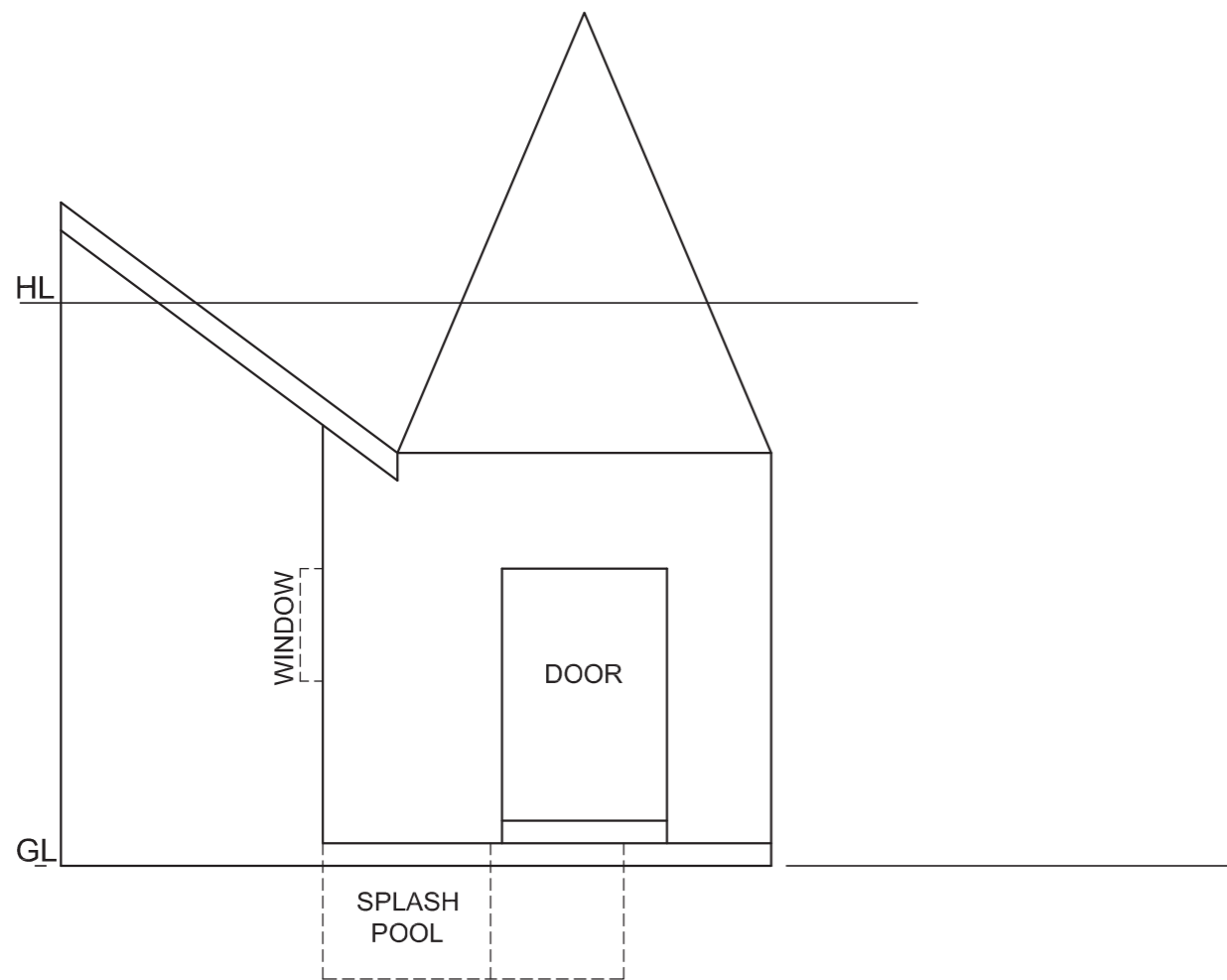
Instructions:

Complete the perspective drawing.

- Align the drawing sheet with the ground line (GL).
- Determine and label the vanishing points.
- Show depth at the door and window.
- Show ALL construction.
- NO hidden detail is required.

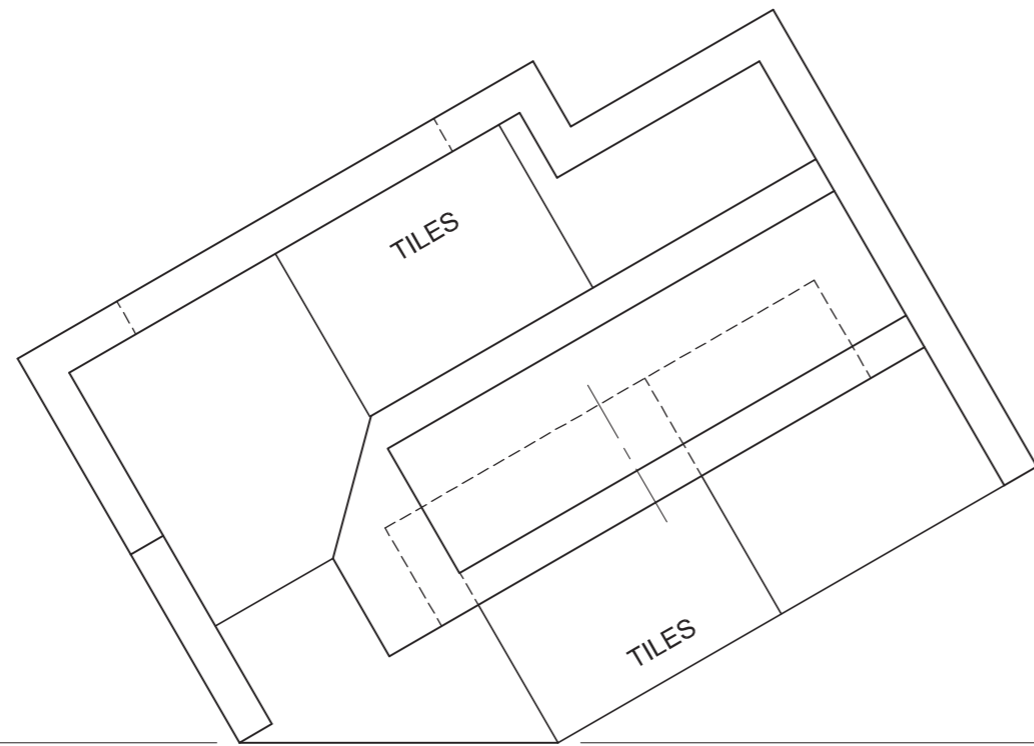
[38]

PP



ASSESSMENT CRITERIA			
1	CONSTRUCTION	7	
2	WALLS, WINDOW, DOOR	16 1/2	
3	SPLASH POOL	7	
4	ROOF	7 1/2	
PENALTIES (-)			
TOTAL		38	
EXAMINATION NUMBER			
EXAMINATION NUMBER			
EXAMINATION NUMBER			4





QUESTION 3: PERSPECTIVE

Given:

Three views of a serving area and the information needed to draw a two-point perspective drawing

PP – Picture plane

HL – Horizon line

GL – Ground line

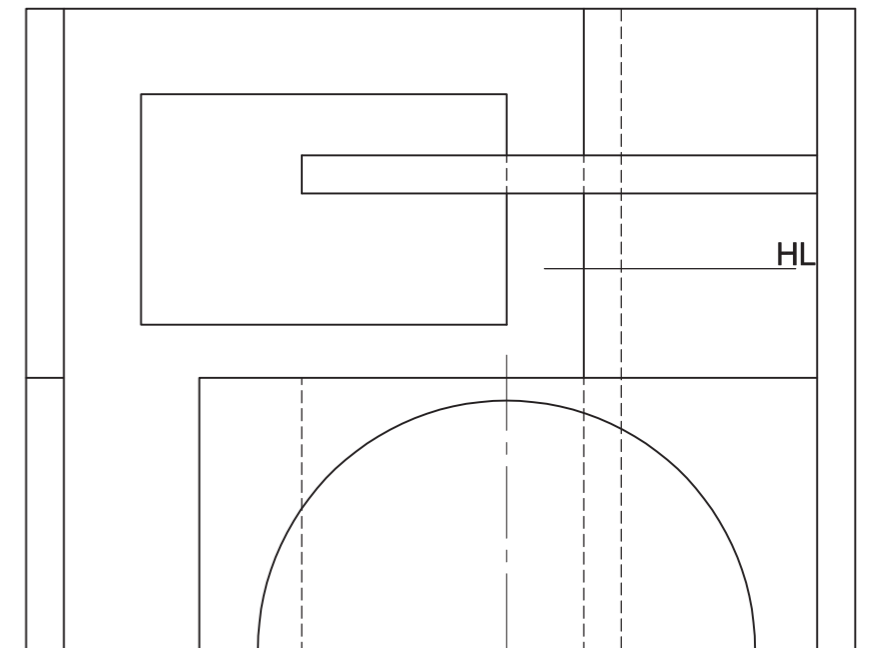
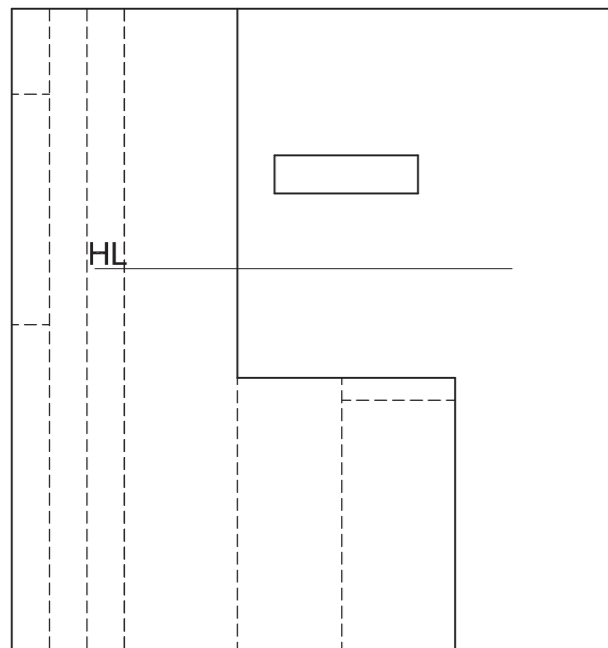
SP – Station point

Instructions:

Complete the perspective drawing.

- Align the drawing sheet with the ground line (GL).
- Determine and label the vanishing points.
- Show ALL construction.
- NO hidden detail is required. **[40]**

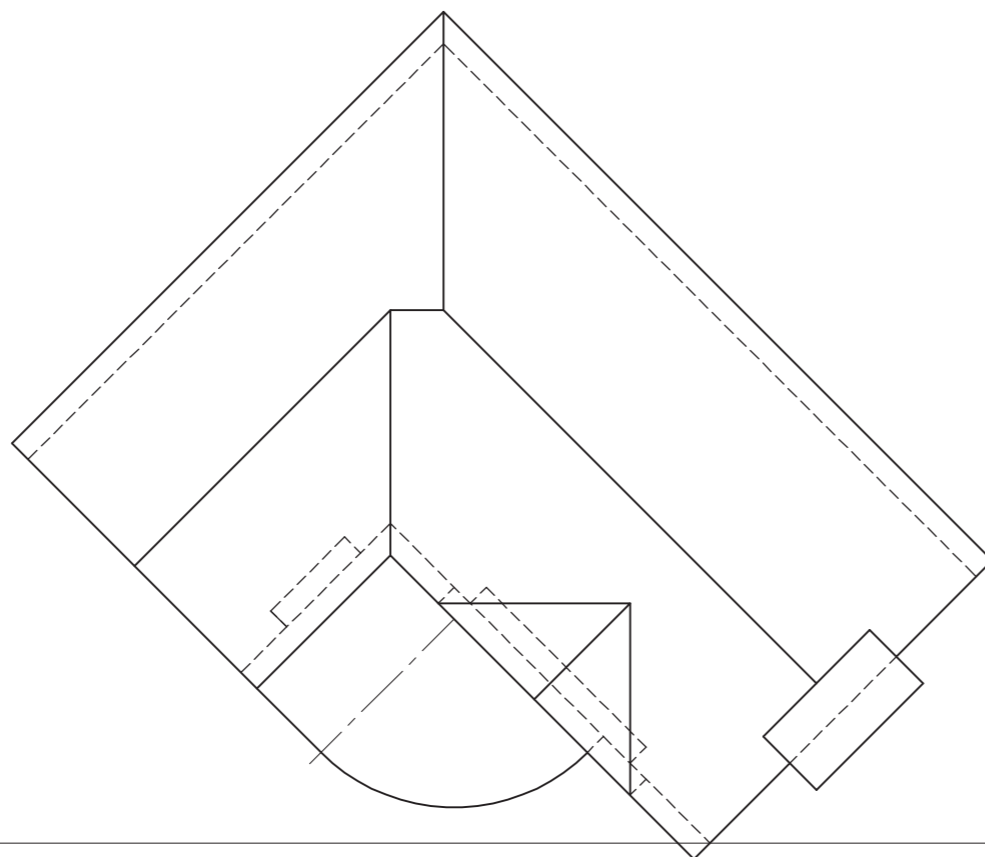
PP



ASSESSMENT CRITERIA			
1	CONSTRUCTION	6	
2	WALLS AND WINDOW	17½	
3	SERVING AREA	11	
4	SEMICIRCLE	5½	
PENALTIES (-)			
TOTAL		40	

EXAMINATION NUMBER	
EXAMINATION NUMBER	4





PP

HL

QUESTION 3: PERSPECTIVE

Given:

Three views of a house and the information needed to draw a two-point perspective drawing

PP – Picture plane

HL – Horizon line

GL – Ground line

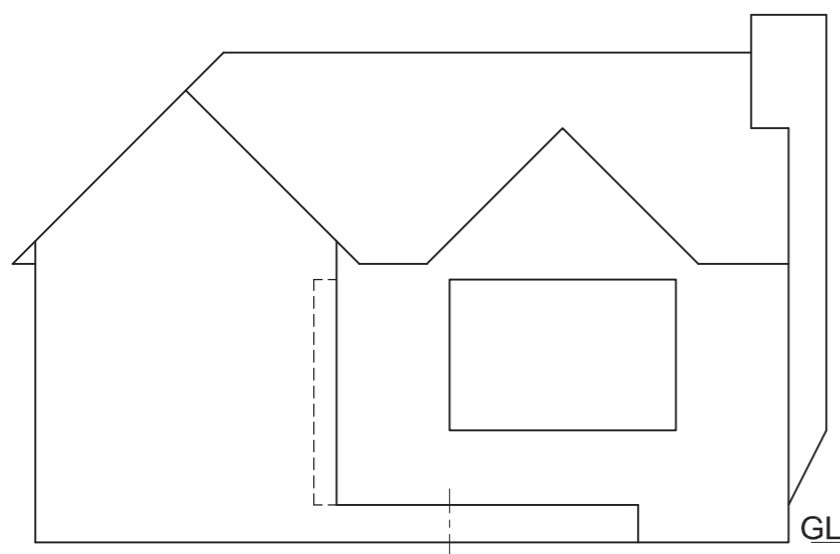
SP – Station point

Instructions:

Complete the perspective drawing.

- Align the drawing sheet with the ground line (GL).
- Determine and label the vanishing points.
- Show ALL construction.
- NO internal detail is required.
- NO hidden detail is required.

[40]



GL

SP

ASSESSMENT CRITERIA				
1	CONSTRUCTION	6		
2	WALLS, WINDOW, DOOR	13		
3	CHIMNEY	6		
4	ROOF	10		
5	ARC	5		
PENALTIES (-)				
TOTAL		40		
EXAMINATION NUMBER				
EXAMINATION NUMBER				4





QUESTION 3: PERSPECTIVE

Given:

Two views of a stage for a play and the information needed to draw a two-point perspective drawing

PP – Picture plane

HL – Horizon line

GL – Ground line

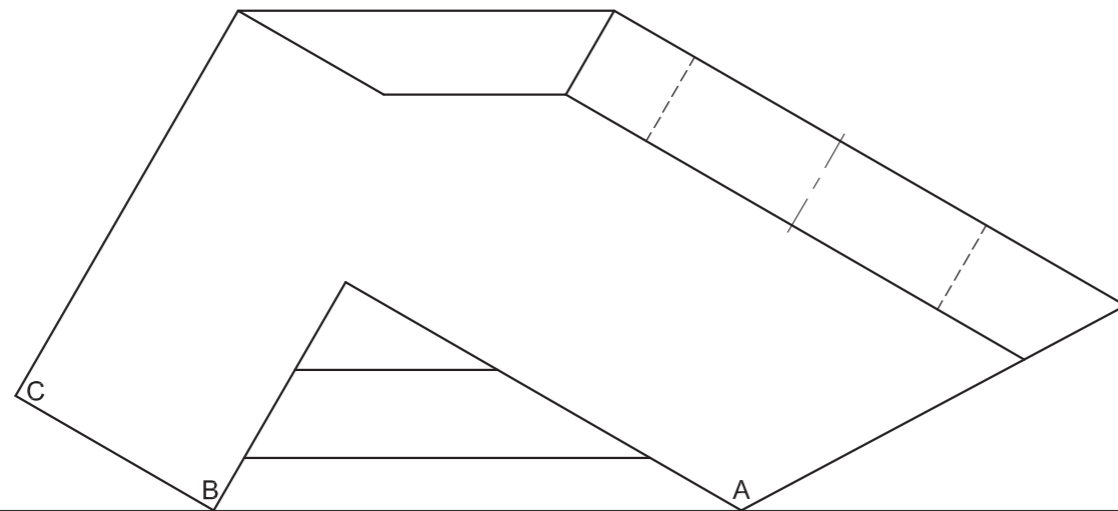
SP – Station point

Instructions:

Complete the perspective drawing.

- Align the drawing sheet with the ground line (GL).
- Determine and label the vanishing points.
- Show ALL construction.
- NO hidden detail is required.

[37]

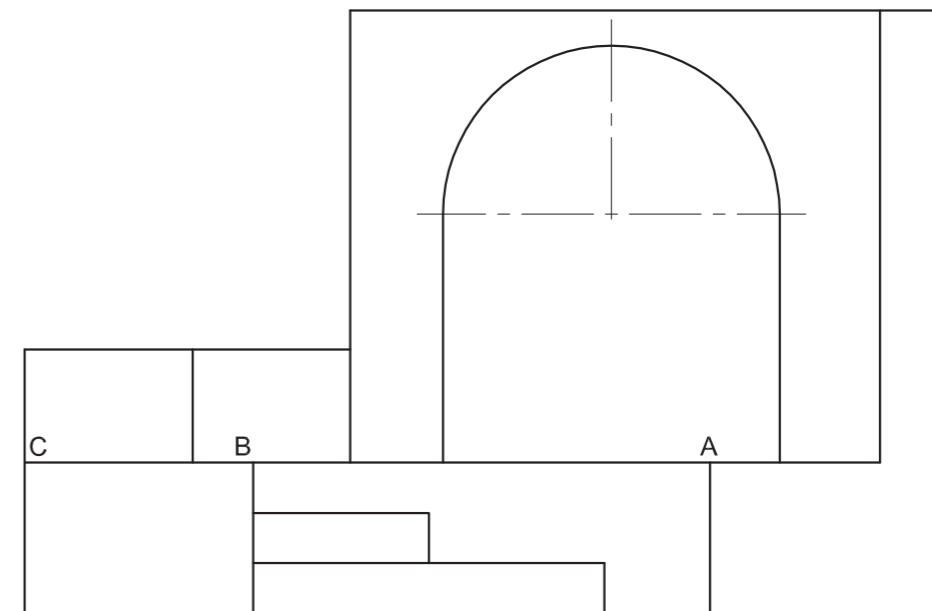


PP

HL

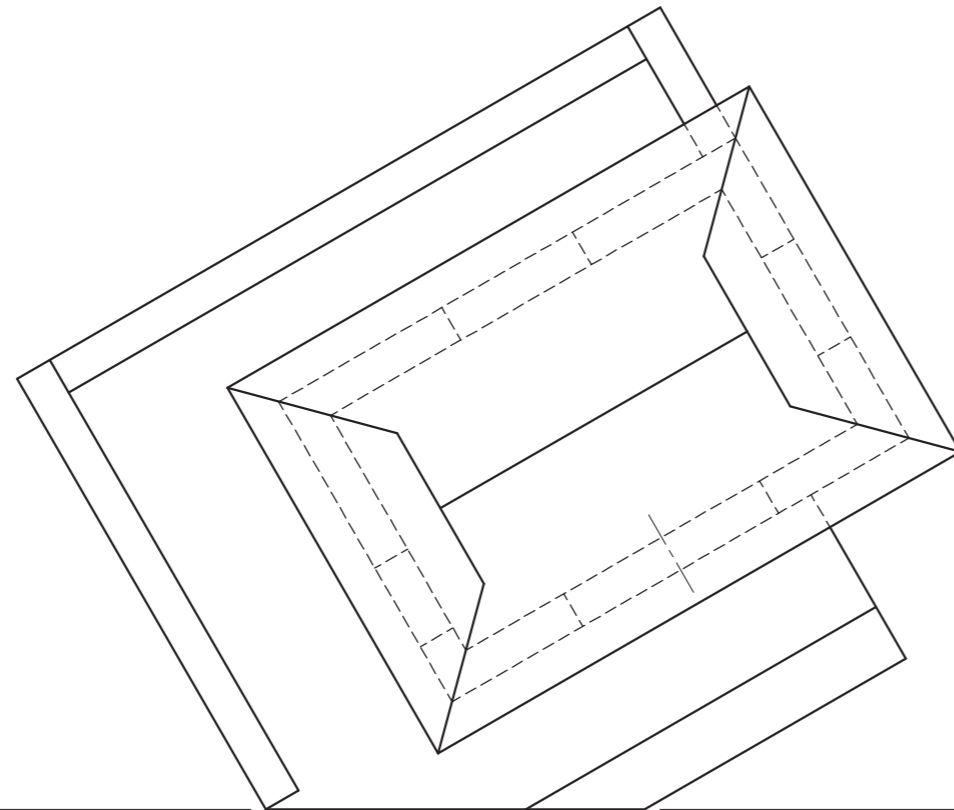
SP

GL



ASSESSMENT CRITERIA			
1	CONSTRUCTION + VPs	7	
2	STEPS + FLOOR + WALLS	23	
3	CIRCULAR ARC	7	
PENALTIES (-)			
TOTAL		37	
EXAMINATION NUMBER			
EXAMINATION NUMBER			
EXAMINATION NUMBER			4





QUESTION 3: PERSPECTIVE

Given:

Three views of a shelter with a viewing deck and the information needed to draw a two-point perspective drawing

PP – Picture plane

HL – Horizon line

GL – Ground line

SP – Station point

Instructions:

Complete the perspective drawing.

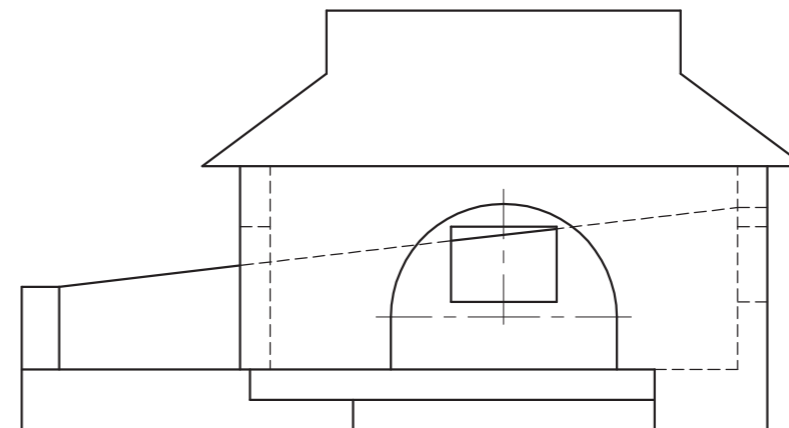
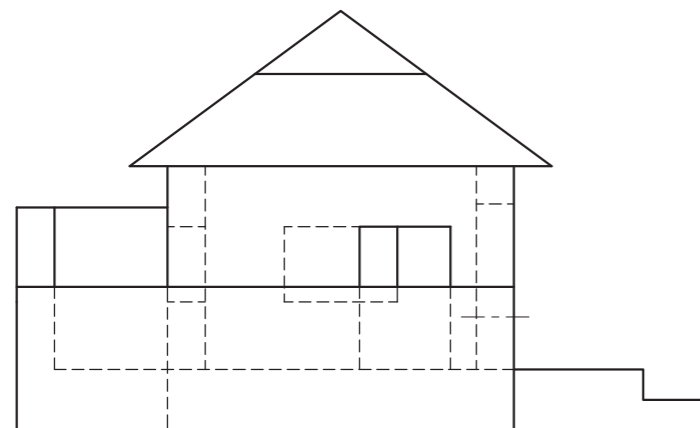
- Align the drawing sheet with the ground line (GL).
- Determine and label the vanishing points.
- Show ALL necessary construction.
- NO hidden detail is required. **[40]**

PP

PP

HL

HL

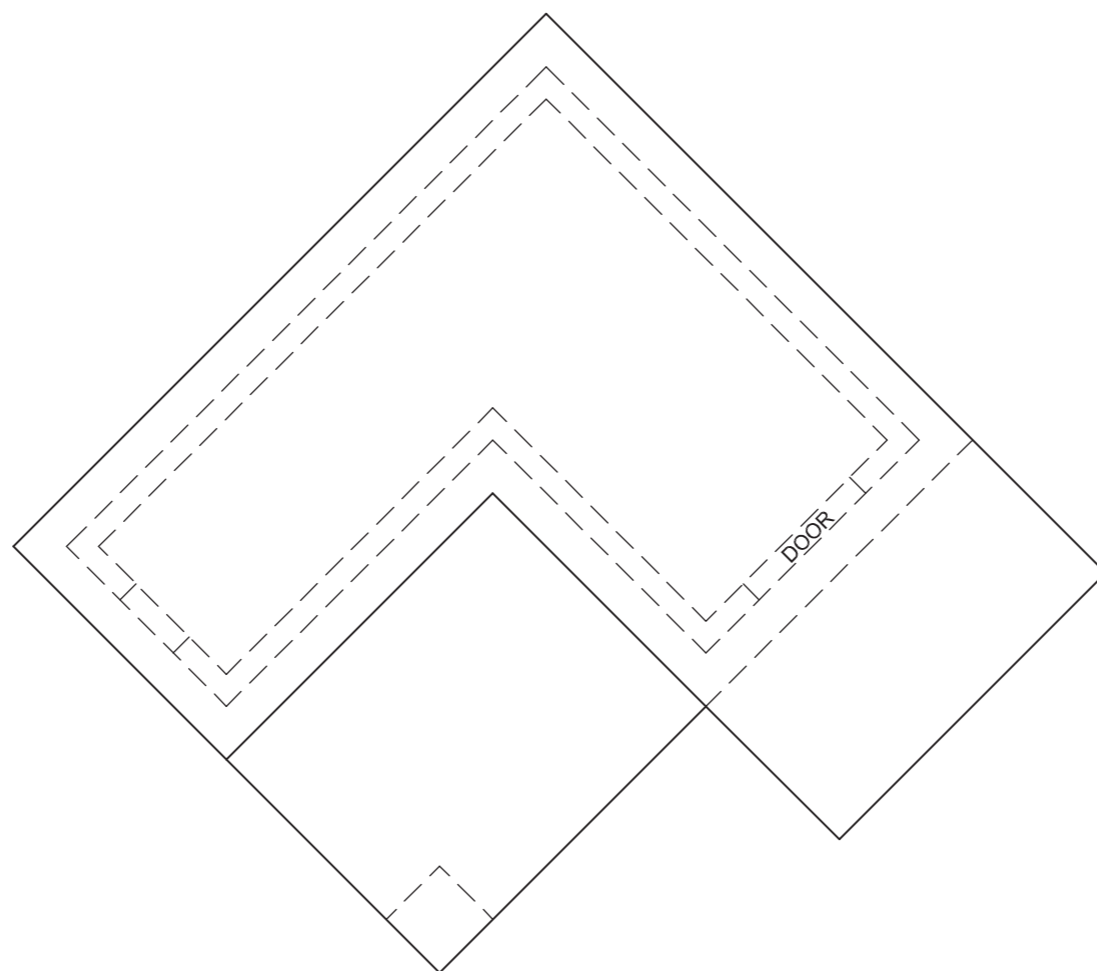


GL

SP

ASSESSMENT CRITERIA			
1	CONSTRUCTION + VPs	7	
2	WALLS + DOORS	22	
3	ROOF	5	
4	CIRCULAR ARC	6	
TOTAL		40	
EXAMINATION NUMBER			
EXAMINATION NUMBER			
EXAMINATION NUMBER			4





QUESTION 3: PERSPECTIVE

Given:

Three views of a double-storey dwelling and the information needed to draw a two-point perspective drawing.

PP – Picture plane

HL – Horizon line

GL – Ground line

SP – Station point

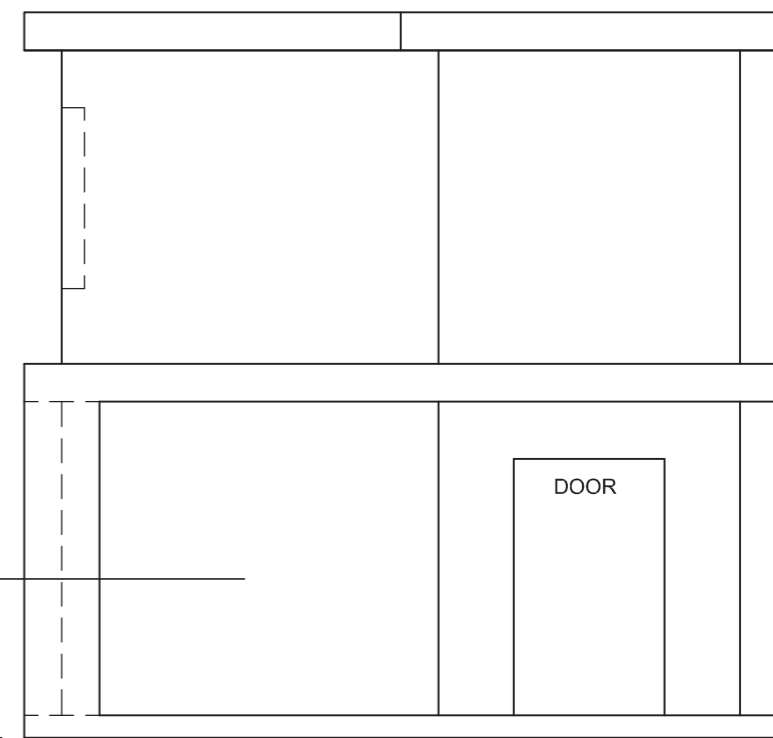
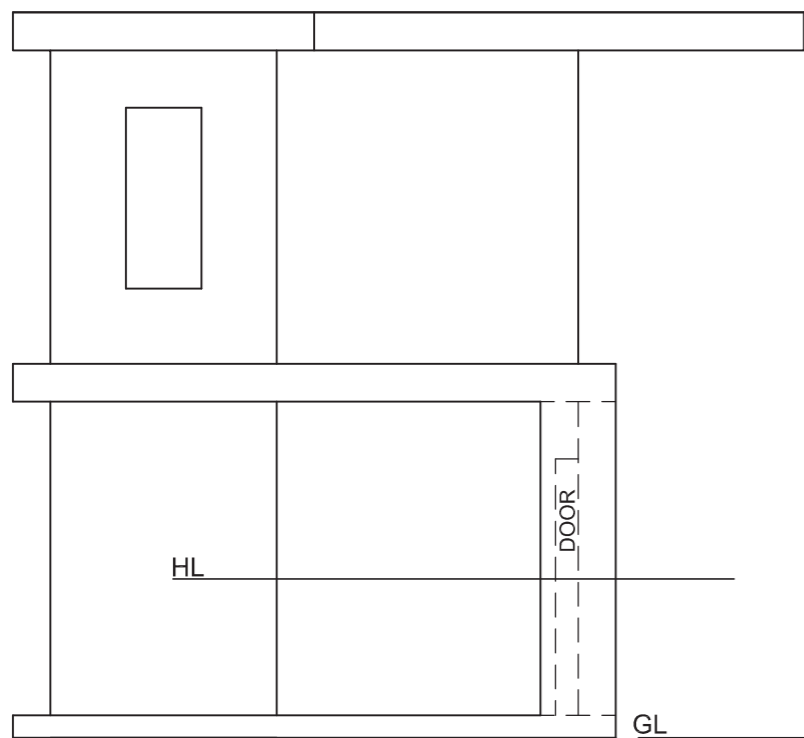
Instructions:

Complete the perspective drawing.

- Align the drawing sheet with the ground line (GL).
- Determine and label the vanishing points.
- Show ALL necessary construction.
- NO hidden detail is required. [39]

ASSESSMENT CRITERIA				
1	CONSTRUCTION + VPs	5		
2	FLOOR	4		
3	GROUND FLOOR	12		
4	FIRST FLOOR	12		
5	WINDOW + DOOR	6		
PENALTIES (-)				
TOTAL		39		

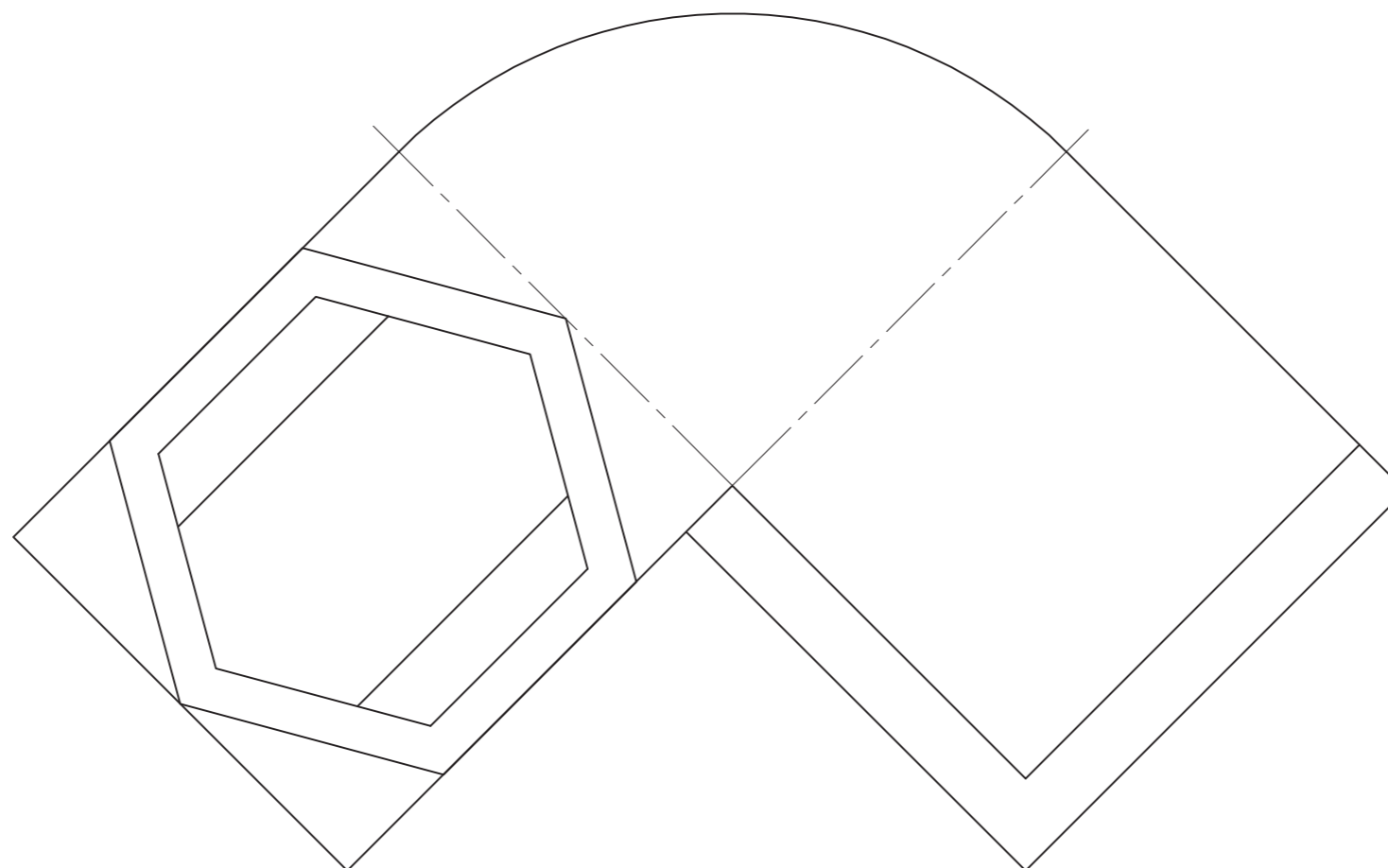
PP



SP

EXAMINATION NUMBER	
EXAMINATION NUMBER	4





PP and HL

QUESTION 3: PERSPECTIVE

Given:

Three views of a wooden deck with a hexagonal pool and the information needed to draw a two-point perspective drawing.

PP – Picture plane

HL – Horizon line

GL – Ground line

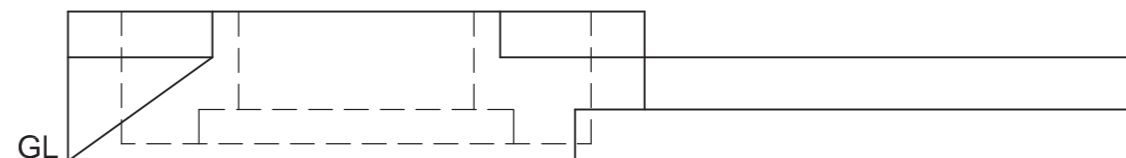
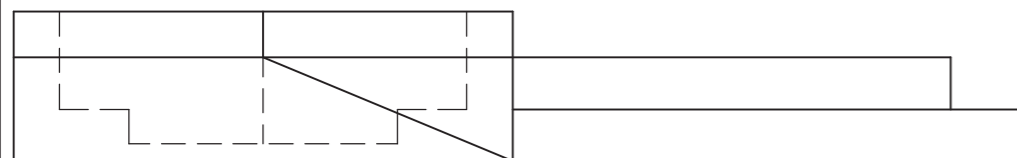
SP – Station point

Instructions:

Complete the perspective drawing.

- Align the drawing sheet with the ground line (GL).
- Determine and label the vanishing points.
- Show ALL necessary construction.
- NO hidden detail is required. **[39]**

ASSESSMENT CRITERIA			
1	CONSTRUCTION + VPs	6	
2	BASE + STAIRS	12½	
3	POOL	13½	
4	CIRCULAR ARC	7	
PENALTIES (-)			
TOTAL		39	



+
SP

EXAMINATION NUMBER	
EXAMINATION NUMBER	4



QUESTION 3: PERSPECTIVE

Given:

Two views of an entrance with a control point and the information needed to draw a two-point perspective drawing

PP – Picture plane

HL – Horizon line

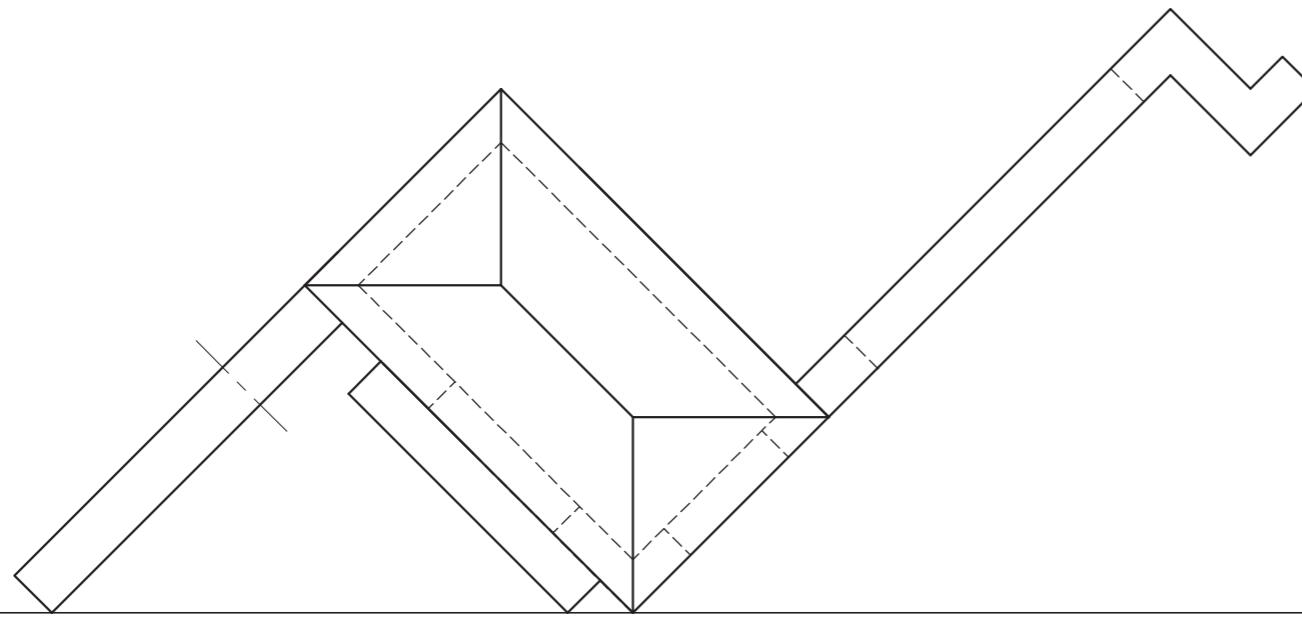
GL – Ground line

SP – Station point

Instructions:

Complete the perspective drawing.

- Align the drawing sheet with the ground line (GL).
- Determine and label the vanishing points.
- Show ALL necessary construction.
- Show the wall thickness at the window and door.
- NO internal or hidden detail is required. [40]



PP

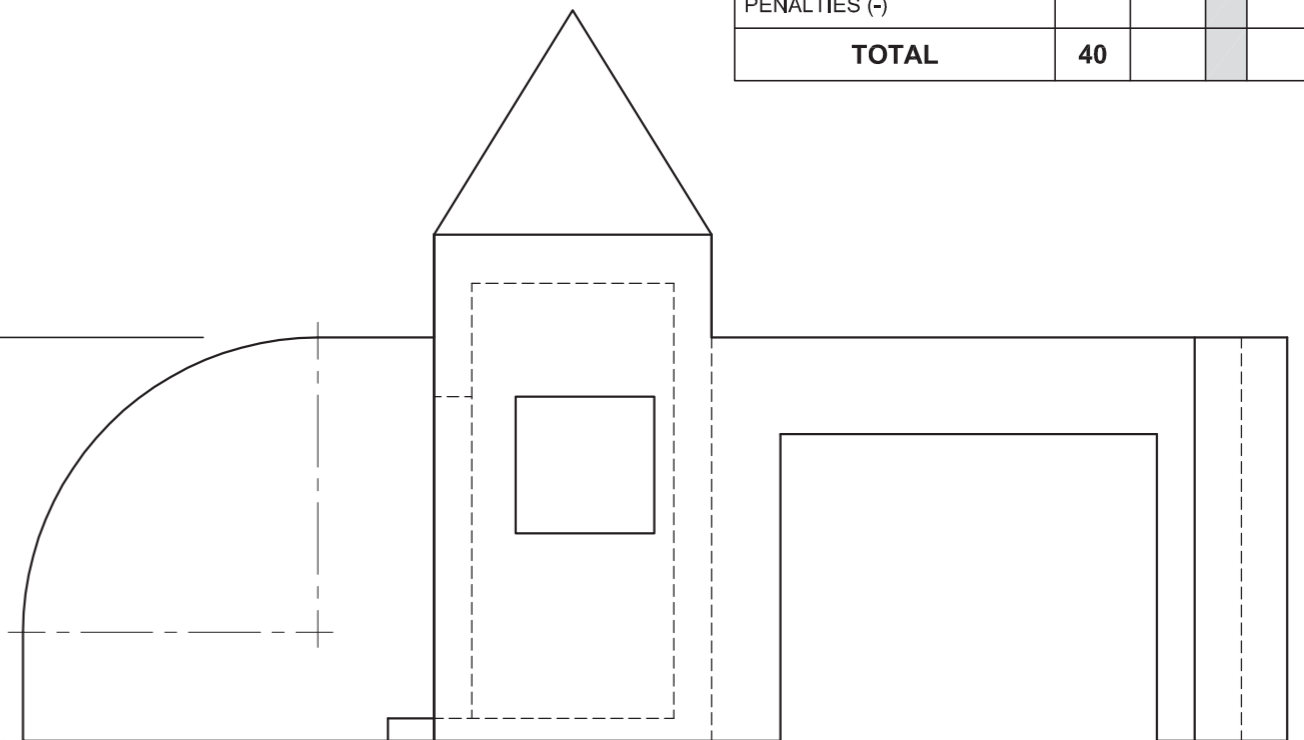
ASSESSMENT CRITERIA				
1	CONSTRUCTION + VPs	7		
2	ROOF	4		
3	WALLS	17		
4	QUARTER-CIRCLE	6		
5	WINDOW + DOOR	6		
PENALTIES (-)				
TOTAL		40		

HL

GL

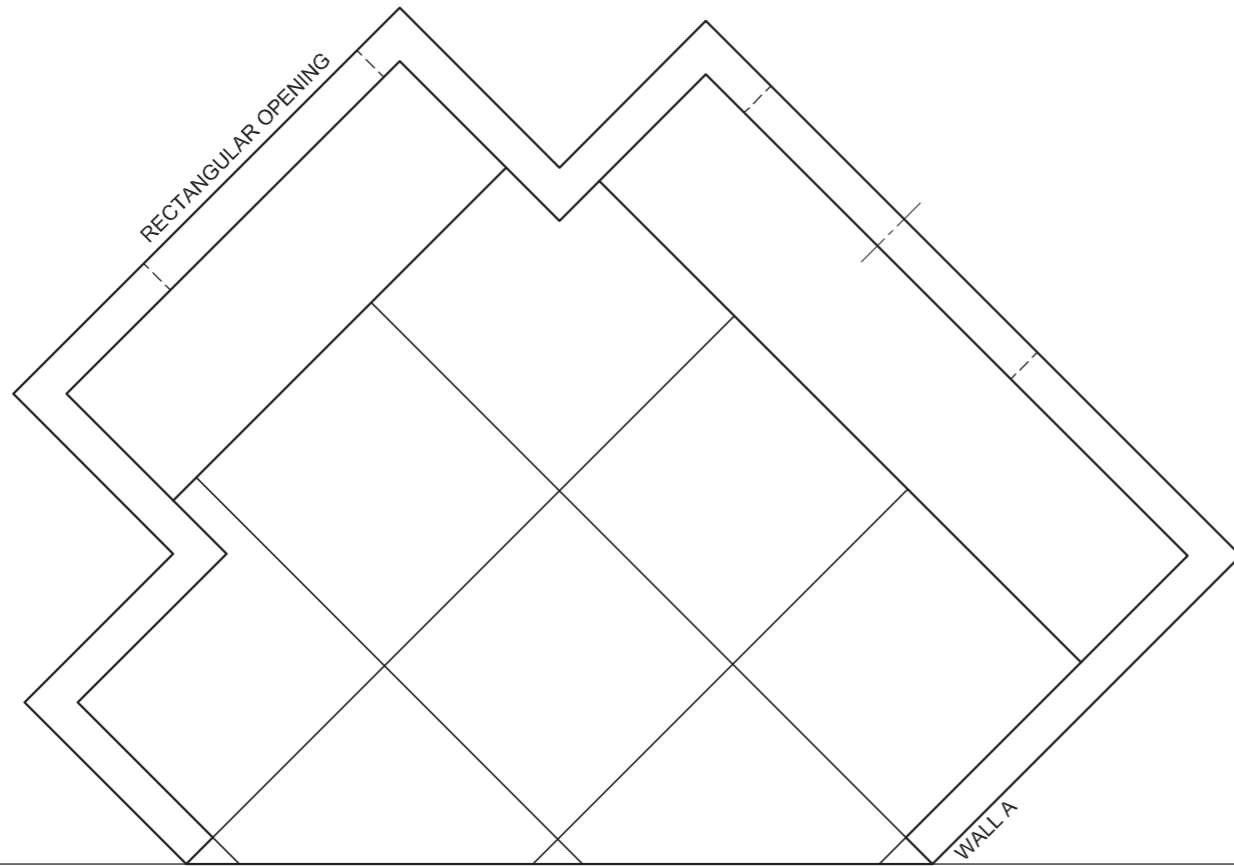
+

SP



EXAMINATION NUMBER	
EXAMINATION NUMBER	4





QUESTION 3: PERSPECTIVE

Given:

Two views of an outside entertainment area and the information needed to draw a two-point perspective drawing

PP – Picture plane

HL – Horizon line

GL – Ground line

SP – Station point

Instructions:

Complete the perspective drawing.

- Align the drawing sheet with the ground line (GL).
- Determine and label the vanishing points.
- Show ALL necessary construction.
- Show the wall thickness at the openings.
- Show the floor tiles.
- NO hidden detail is required. [39]

ASSESSMENT CRITERIA				
1	CONSTRUCTION + VPs	7		
2	WALLS + TILES	15		
3	OPENINGS + SEATING	10		
4	SEMI-CIRCLE	7		
PENALTIES (-)				
TOTAL		39		

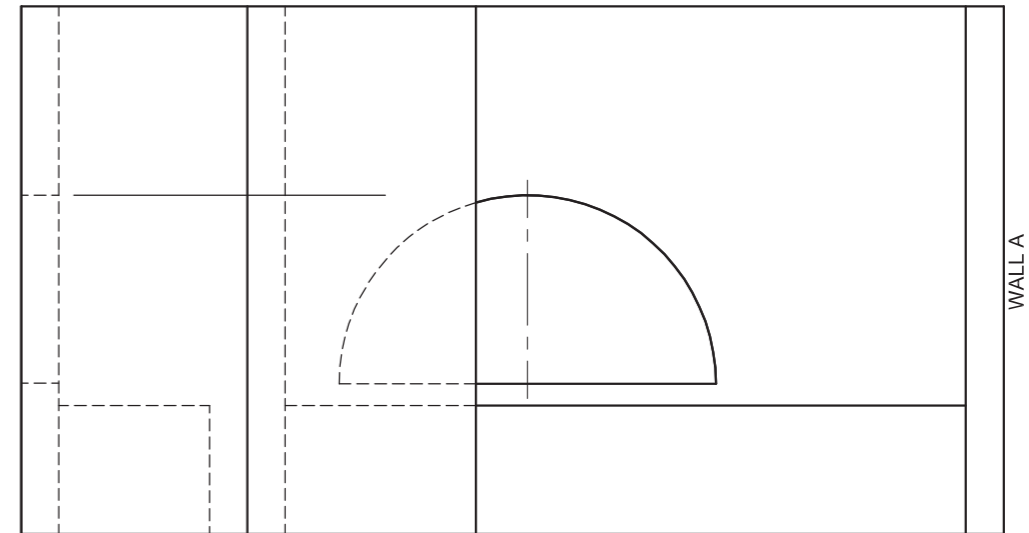
PP

HL

GL

+

SP



EXAMINATION NUMBER

EXAMINATION NUMBER

4





QUESTION 3: PERSPECTIVE

Given:

Three views of a braai area and information needed to draw a two-point perspective drawing.

PP – Picture plane

HL – Horizon line

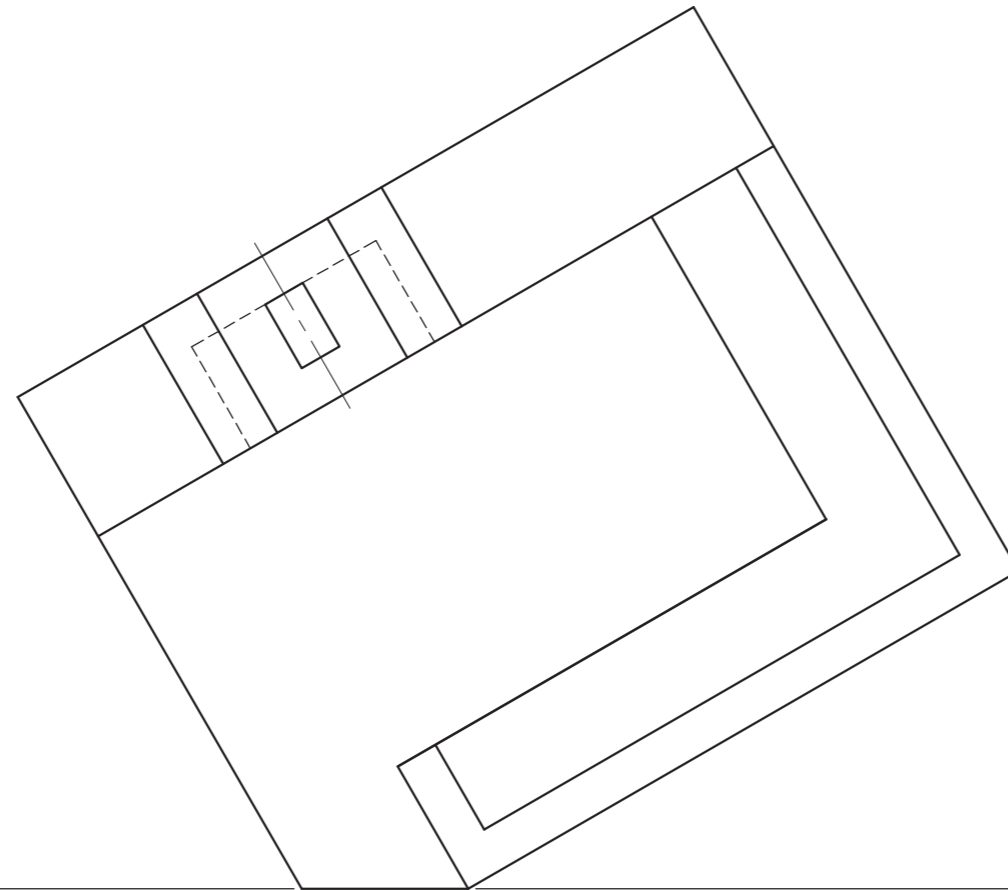
GL – Ground line

SP – Station point

Instructions:

Complete the perspective drawing.

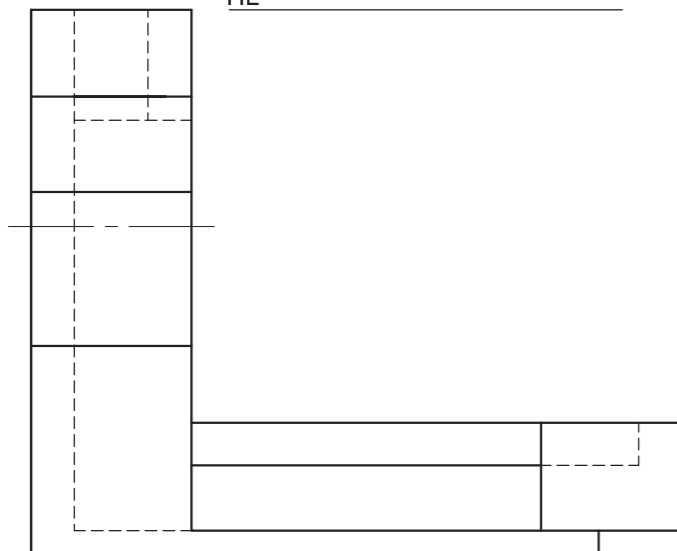
- Align the drawing sheet with the ground line.
- Determine and label the vanishing points.
- Show ALL necessary construction.
- NO hidden detail is required. [40]



PP

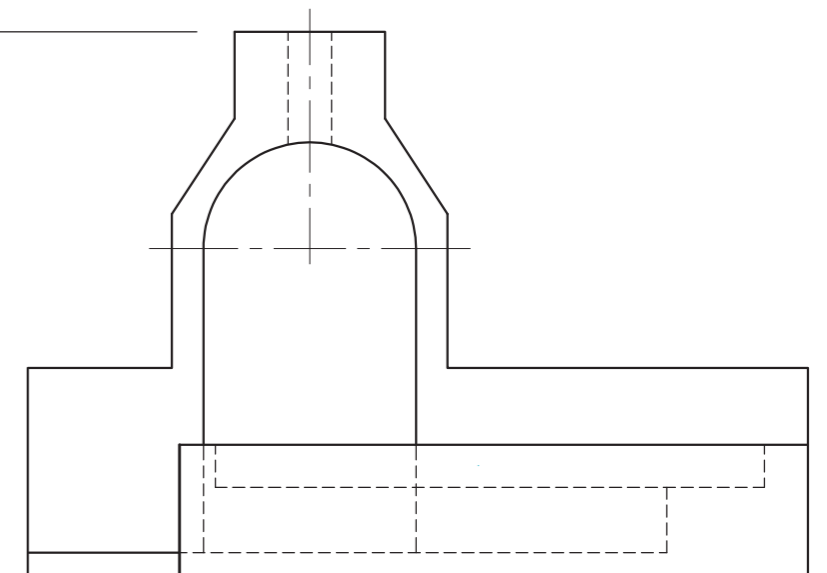
ASSESSMENT CRITERIA			
1	CONSTRUCTION + VPs	7	
2	BRAAI	14½	
3	SEATING	13	
4	SEMI-CIRCLE	5½	
TOTAL		40	

HL



GL

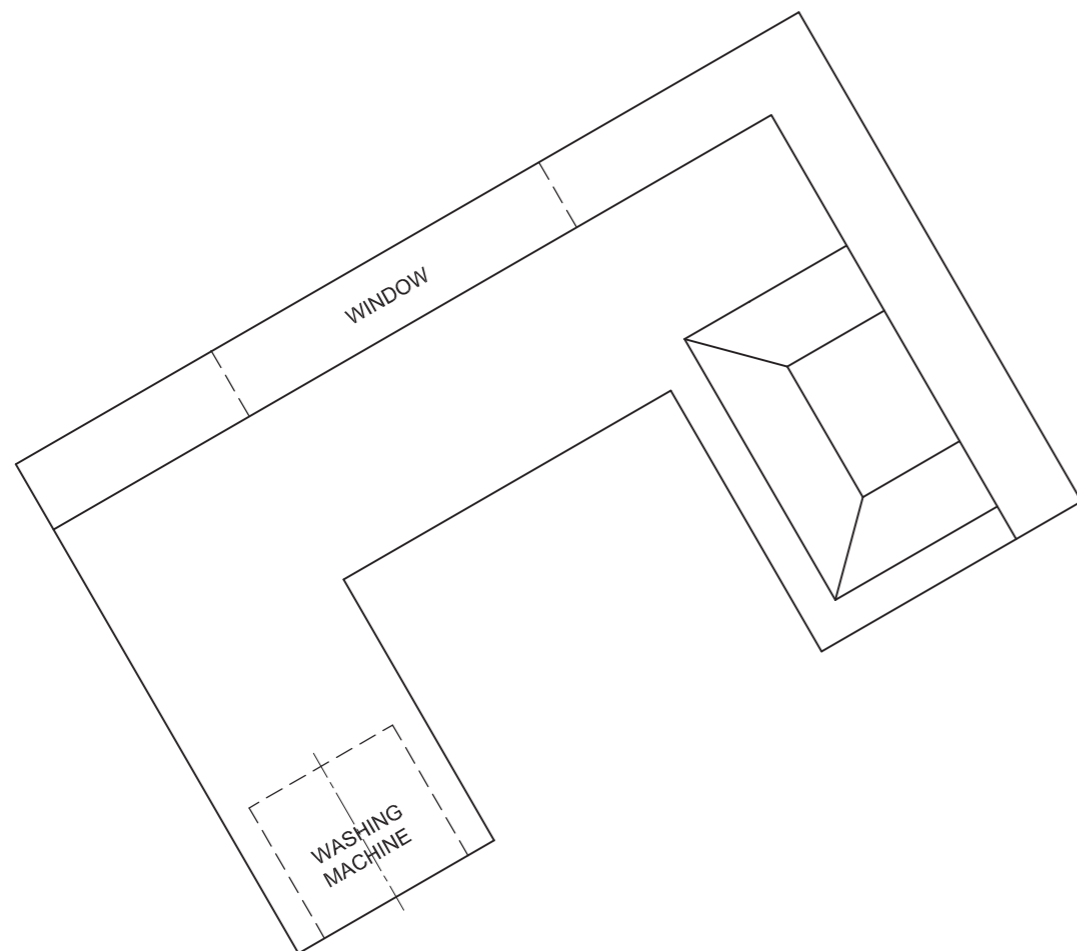
SP



EXAMINATION NUMBER

EXAMINATION NUMBER

4



QUESTION 3: PERSPECTIVE

Given:

Two views showing the interior of a kitchen and the information needed to draw a two-point perspective drawing

PP – Picture plane

HL – Horizon line

GL – Ground line

SP – Station point

Instructions:

Complete the perspective drawing.

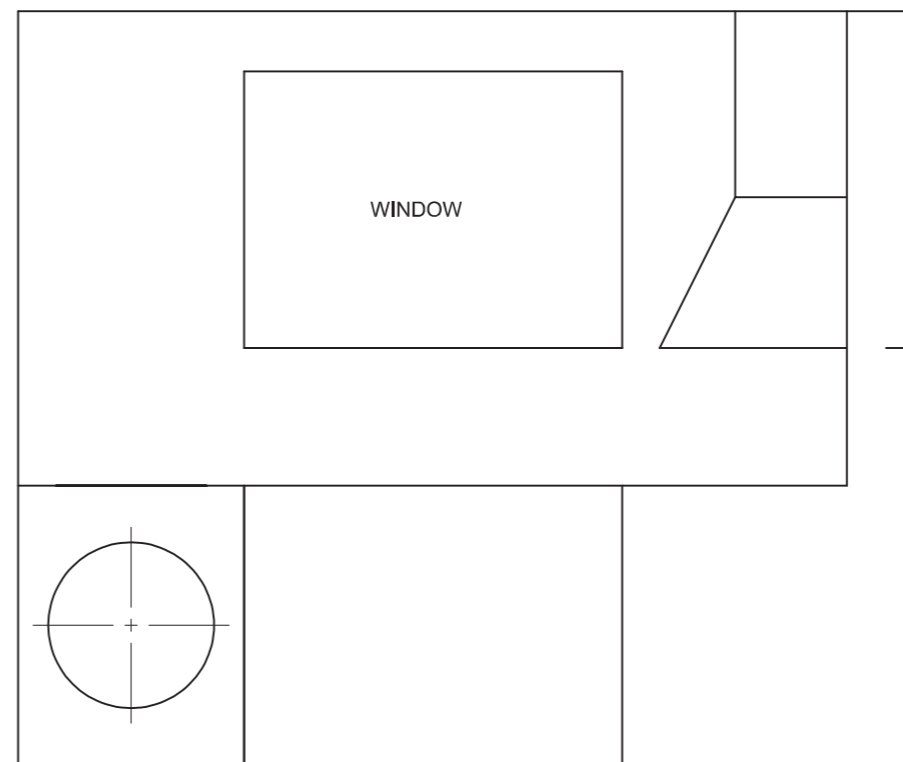
- Align the drawing sheet with the ground line (GL).
- Determine and label the vanishing points.
- Show ALL necessary construction.
- Show the wall thickness at the window.
- Show the depth of the washing machine drum.
- NO hidden detail is required. **[39]**

PP

HL

GL

SP

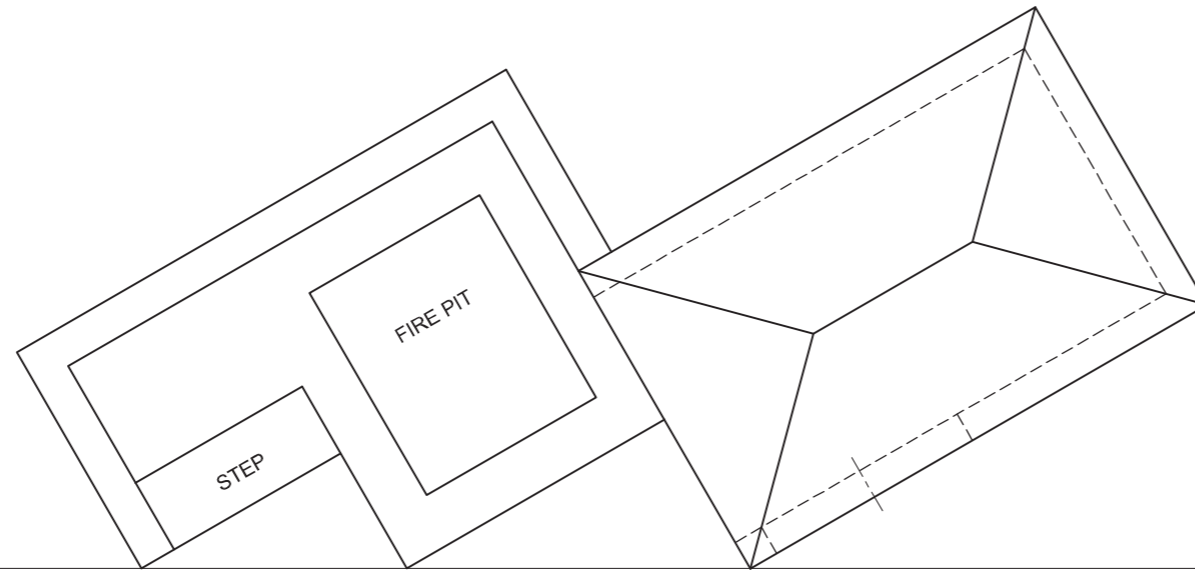


HL

ASSESSMENT CRITERIA			
1	CONSTRUCTION + VPs	6	
2	WALLS + CUPBOARDS	17½	
3	EXTRACTOR + CIRCLES	15½	
TOTAL		39	
EXAMINATION NUMBER			
EXAMINATION NUMBER			4



STAPLE



QUESTION 3: PERSPECTIVE

Given:

Two views of a recreational area and the information needed to draw a two-point perspective drawing.

PP – Picture plane

HL – Horizon line

GL – Ground line

SP – Station point

Instructions:

Complete the perspective drawing.

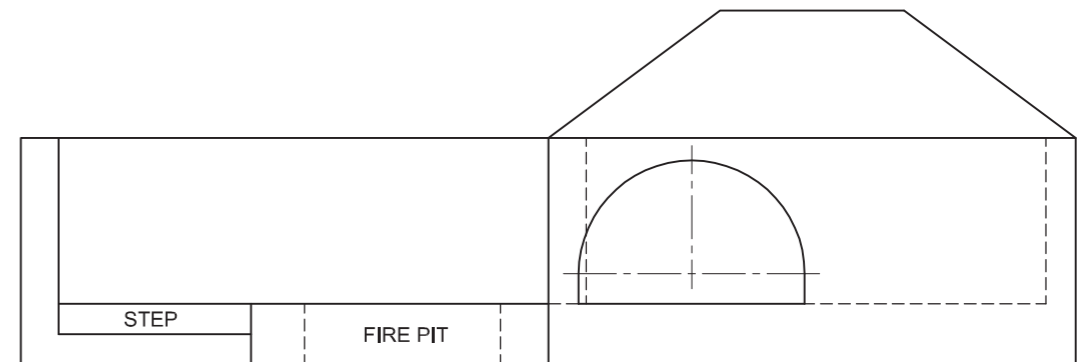
- Align the drawing sheet with the ground line (GL).
- Determine and label the vanishing points.
- Show ALL necessary construction.
- NO hidden detail is required.

[41]

PP

HL

GL

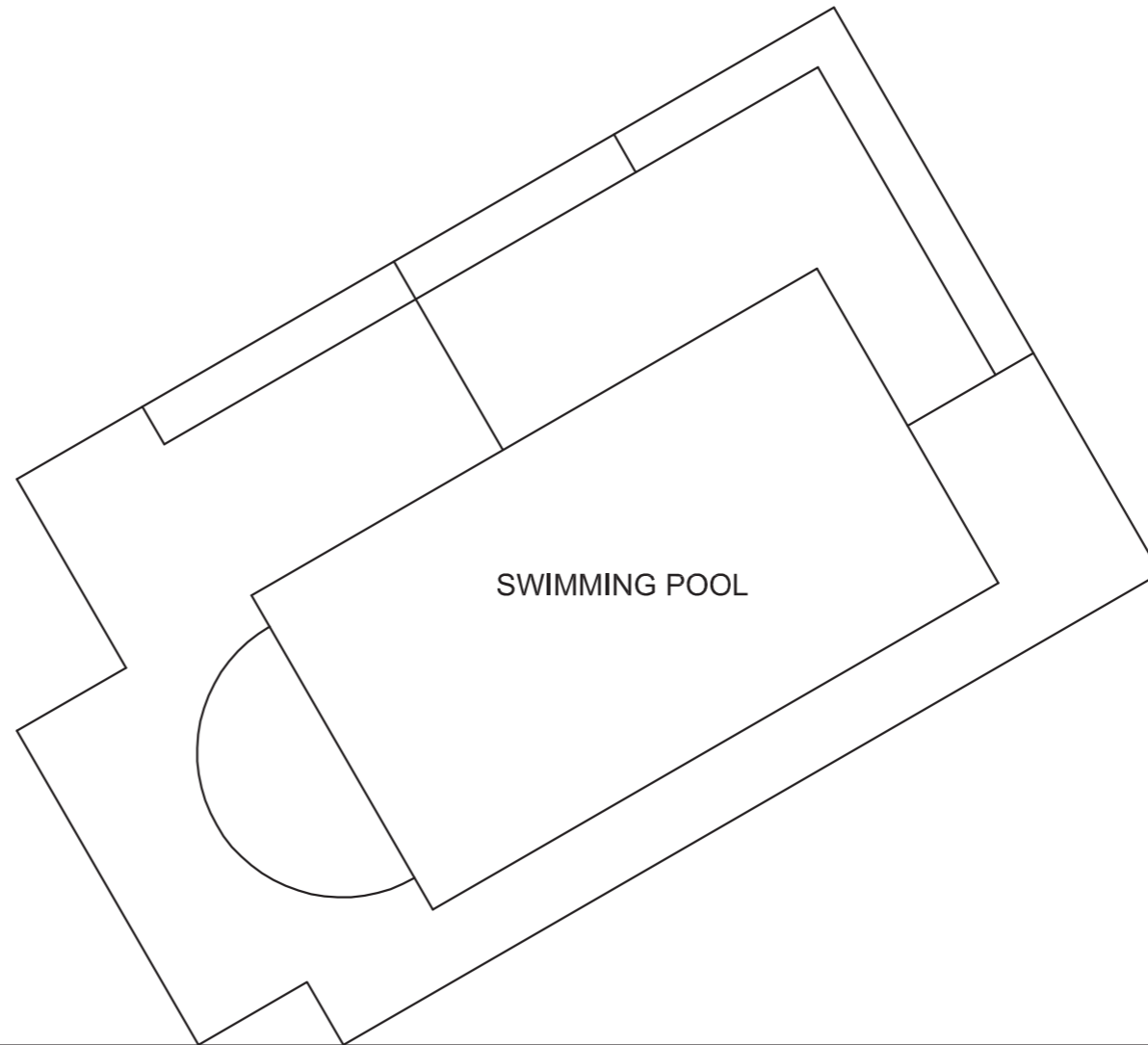


+

SP

ASSESSMENT CRITERIA			
1	CONSTRUCTION + VPs	7	
2	WALLS	13½	
3	BUILDING + ROOF	9	
4	ARCH + CONSTR' + PIT	11½	
TOTAL		41	
EXAMINATION NUMBER			
EXAMINATION NUMBER			4





QUESTION 3: PERSPECTIVE

Given:

Two views of an entertainment area and swimming pool and the information needed to draw a two-point perspective drawing.

PP – Picture plane

HL – Horizon line

GL – Ground line

SP – Station point

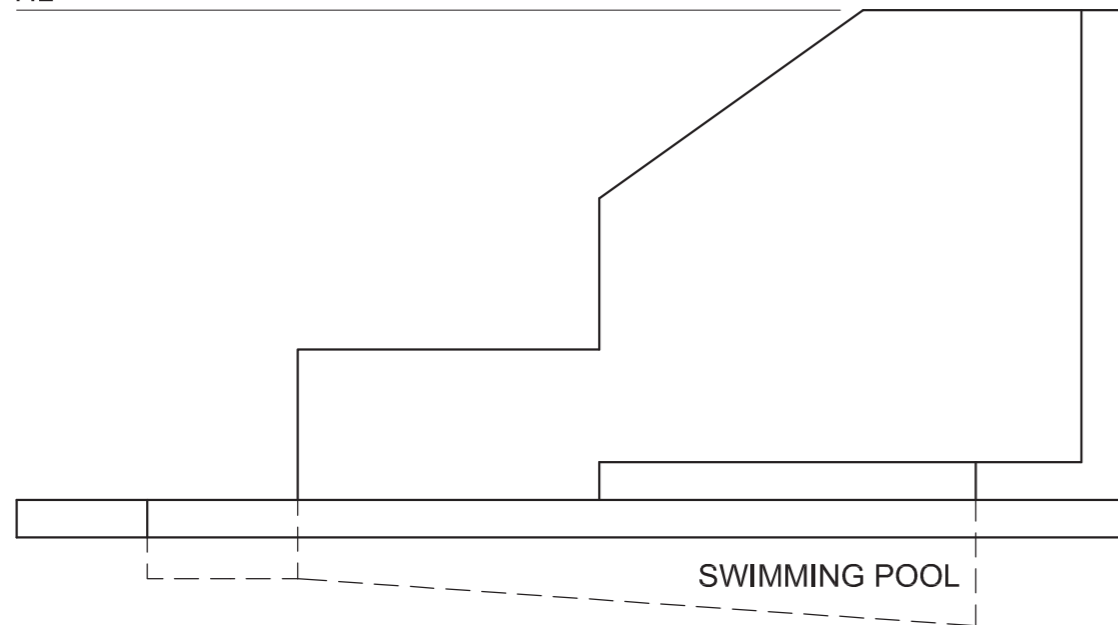
Instructions:

Complete the perspective drawing.

- Align the drawing sheet with the ground line (GL).
- Determine and label the vanishing points.
- Show ALL necessary construction.
- NO hidden detail is required. **[39]**

PP

HL



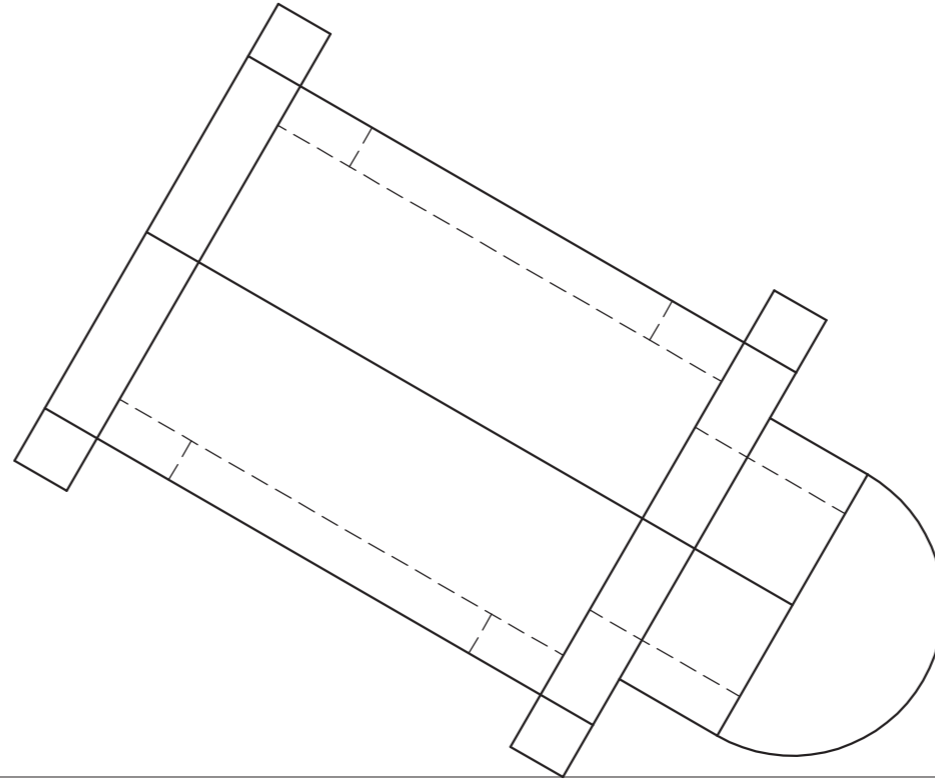
GL

+

SP

ASSESSMENT CRITERIA				
1	CONSTRUCTION + VPs	6		
2	SURROUND	9½		
3	WALL + STEP	12		
4	SWIMMING POOL	7		
5	SEMI-CIRCLE	4½		
TOTAL		39		
EXAMINATION NUMBER				
EXAMINATION NUMBER				4





QUESTION 3: PERSPECTIVE

Given:

Three views of a wedding chapel and the information needed to draw a two-point perspective drawing

PP – Picture plane

HL – Horizon line

GL – Ground line

SP – Station point

Instructions:

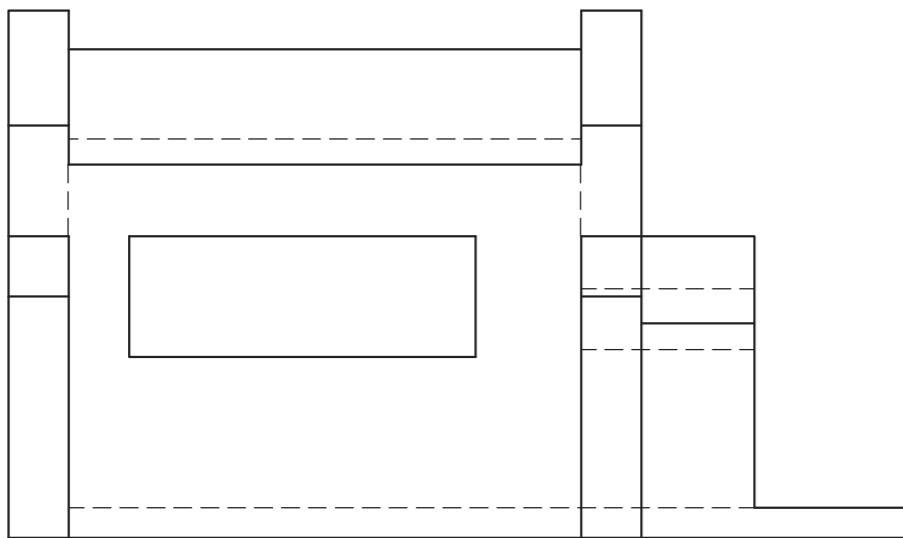
Complete the perspective drawing.

- Align the drawing sheet with the ground line (GL).
- Determine and label the vanishing points.
- Show ALL necessary construction.
- Show the wall thickness at the window.
- NO hidden or interior detail is required.

[41]

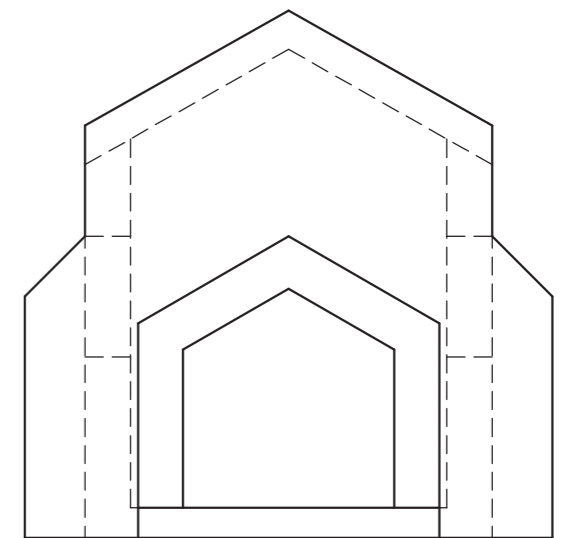
PP

HL



GL

+
SP



ASSESSMENT CRITERIA

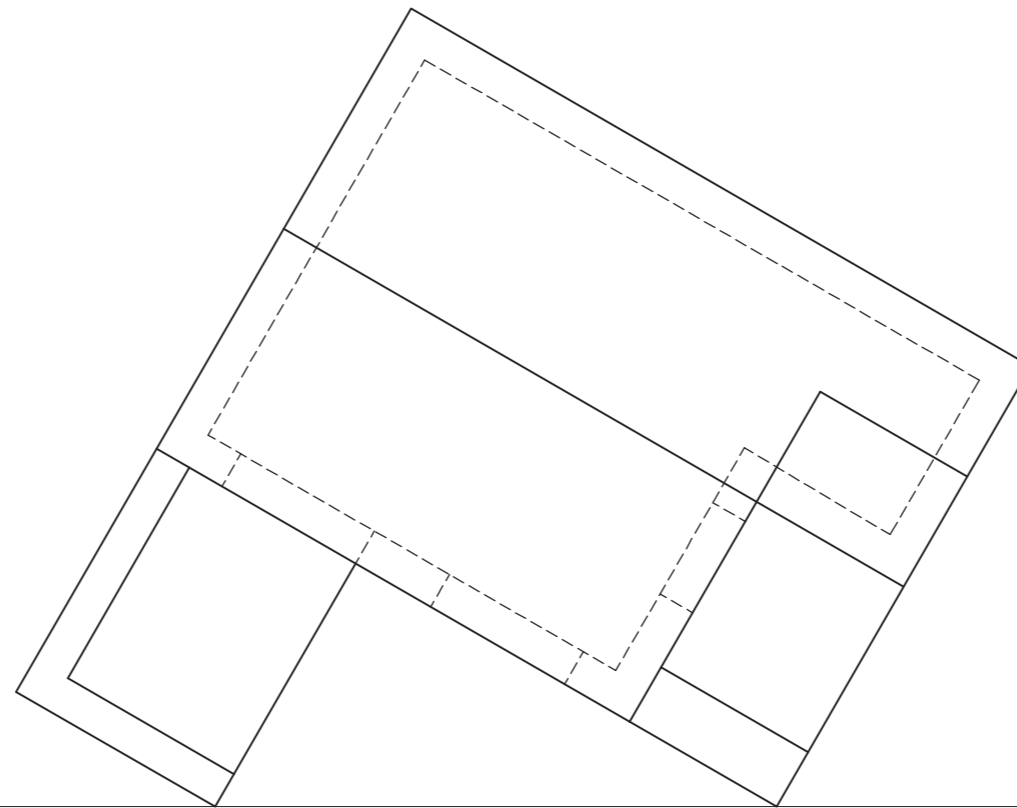
1	CONSTRUCTION + VPs	6		
2	BUILDING + WINDOW	15		
3	ROOF	7½		
4	ENTRANCE	8		
5	SEMICIRCLE	4½		
TOTAL		41		

EXAMINATION NUMBER

EXAMINATION NUMBER

4





VRAAG 3: PERSPEKTIEF

Gegee:

Twee aansigte van 'n kothuis en die inligting benodig om 'n tweepuntperspektieftekening te teken.

PV – Prentvlak

HL – Horisonlyn

GL – Grondlyn

SP – Staantpunt

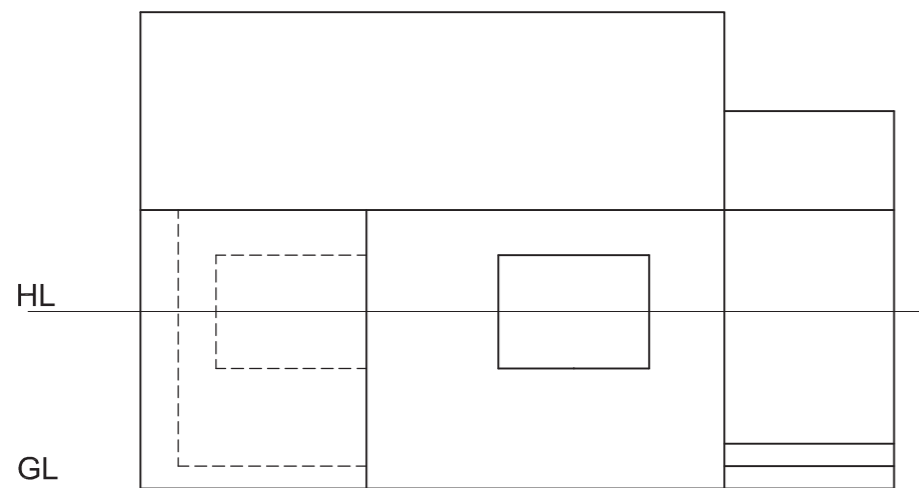
Instruksies:

Voltooi die perspektieftekening.

- Rig die tekenvel volgens die grondlyn (GL).
- Toon ALLE nodige konstruksies.
- Toon die muurdikte by die deur en die vensters.
- GEEN verborge besonderhede word verlang nie. **[40]**

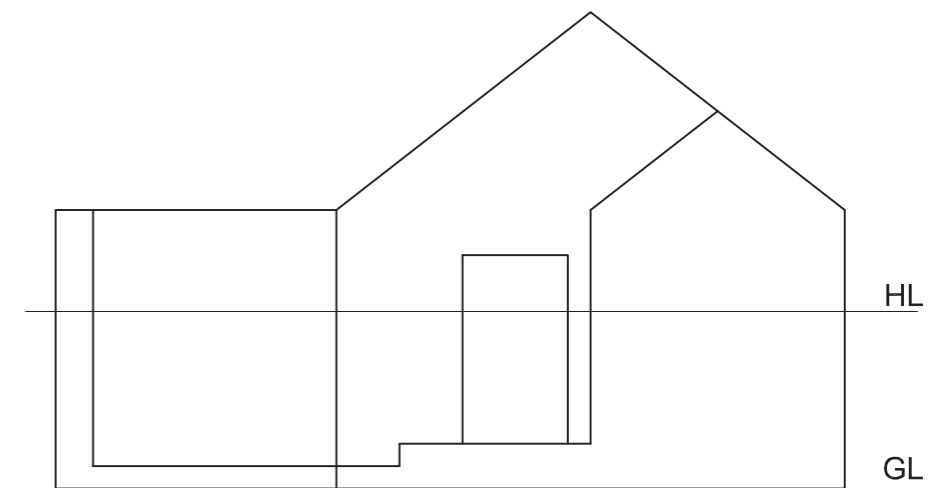
PV

PV



HL

GL



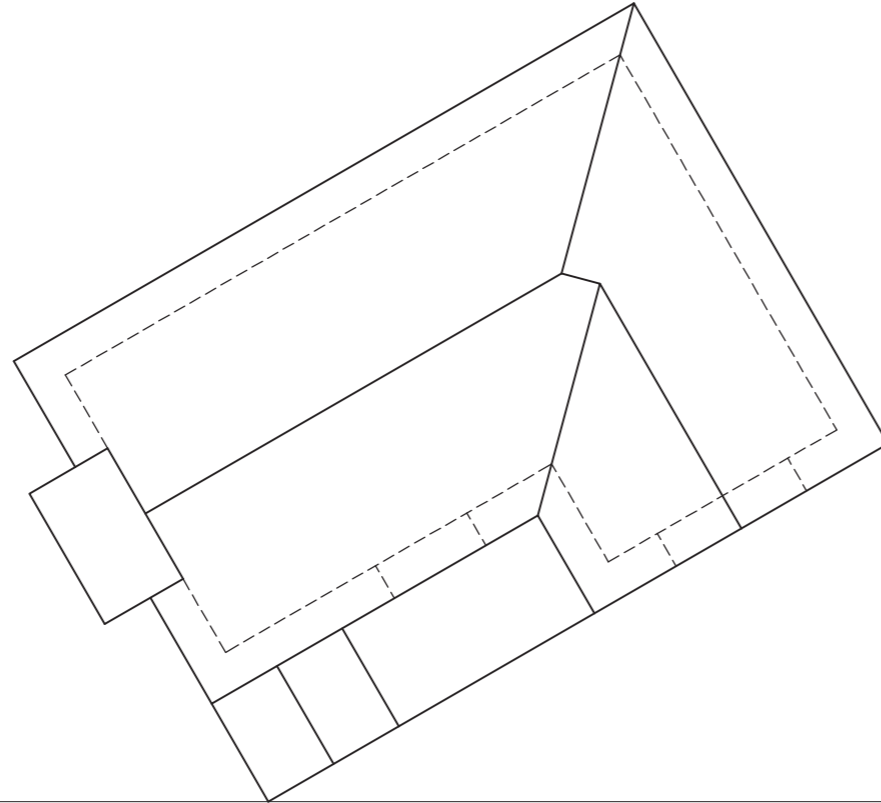
HL

GL

+

SP

ASSESSERINGSKRITERIA			
KONSTRUKSIES + VP'e	7		
TRAPPE	7		
MURE + DEUR + VENSTERS	17		
DAK	9		
TOTAAL	40		
EKSAMENNUMMER			
EKSAMENNUMMER			4



QUESTION 3: PERSPECTIVE

Given:

Two views of a cottage and the information needed to draw a two-point perspective drawing.

PP – Picture plane

HL – Horizon line

GL – Ground line

SP – Station point

Instructions:

Complete the perspective drawing.

- Align the drawing sheet with the ground line (GL).
- Show ALL necessary construction.
- Show the wall thickness at the door and the window.
- NO hidden detail is required. **[41]**

PP

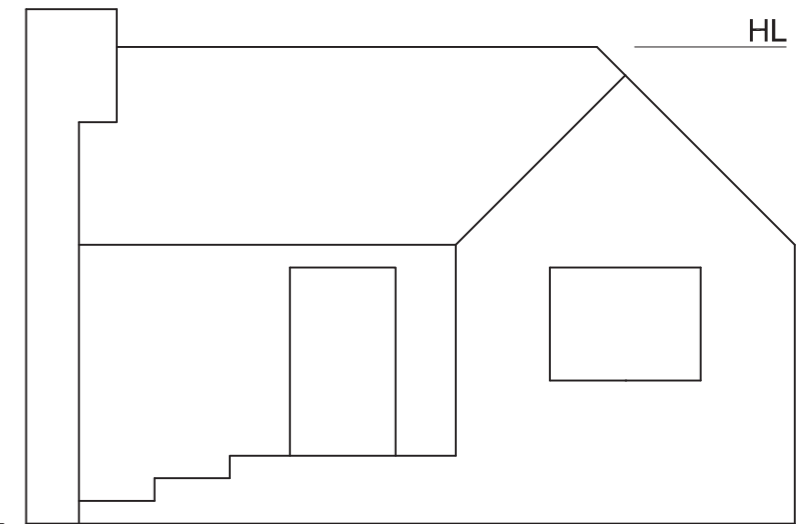
HL

GL

HL

+

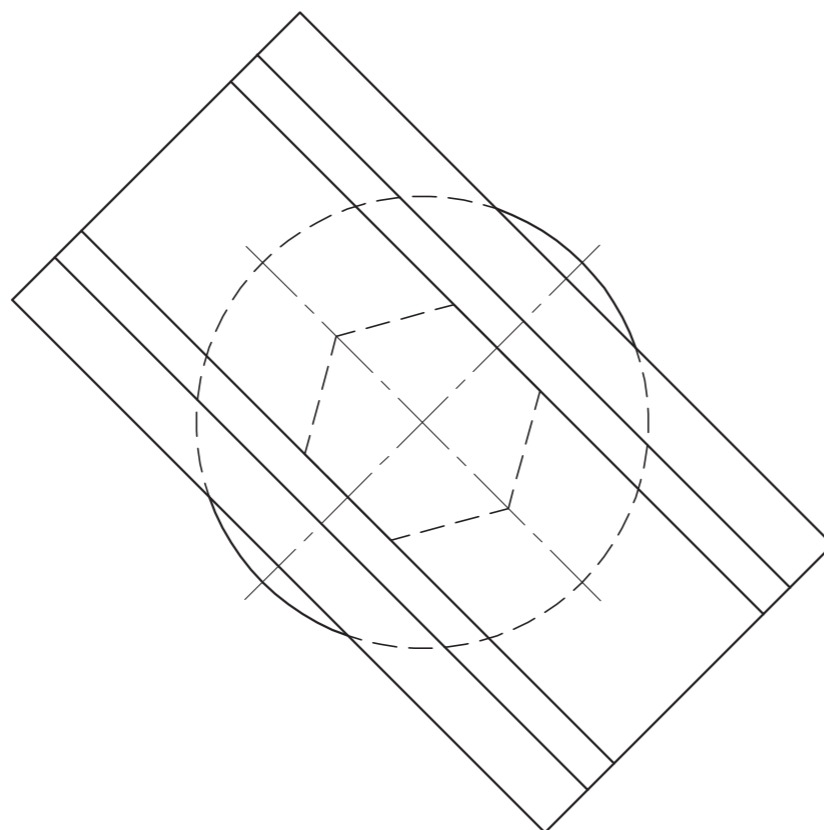
SP



ASSESSMENT CRITERIA			
CONSTRUCTION + VPs	7		
BUILDING	18		
ROOF + CHIMNEY	16		
TOTAL	41		
EXAMINATION NUMBER			
EXAMINATION NUMBER			4



STAPLE



QUESTION 3: PERSPECTIVE

Given:

Three views of a single-pillar bridge and the information needed to draw a two-point perspective drawing.

PP - Picture Plane

HL - Horizon Line

GL - Ground Line

SP - Station Point

Instructions:

Complete the perspective drawing.

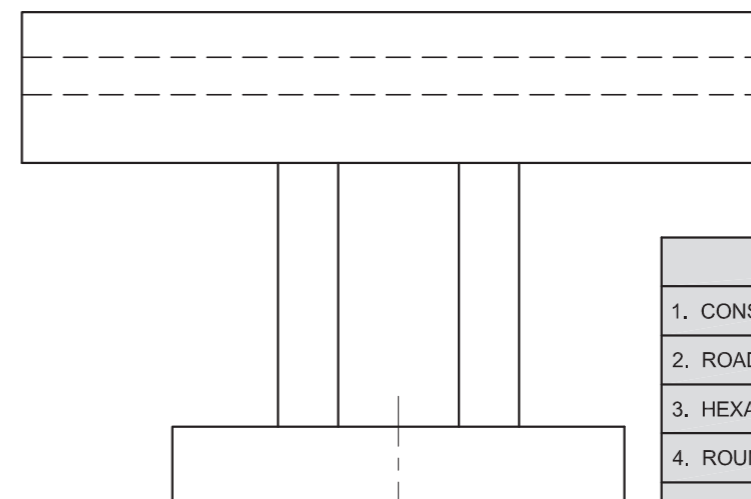
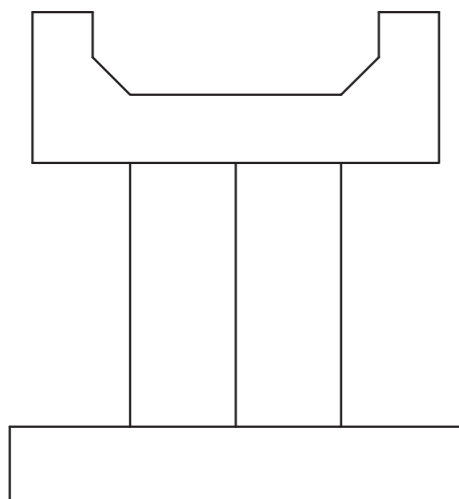
- Align the drawing sheet with the horizon line (HL).
- Locate and label the vanishing points.
- Show ALL necessary construction.
- NO hidden detail is required.

[36]

PP

HL

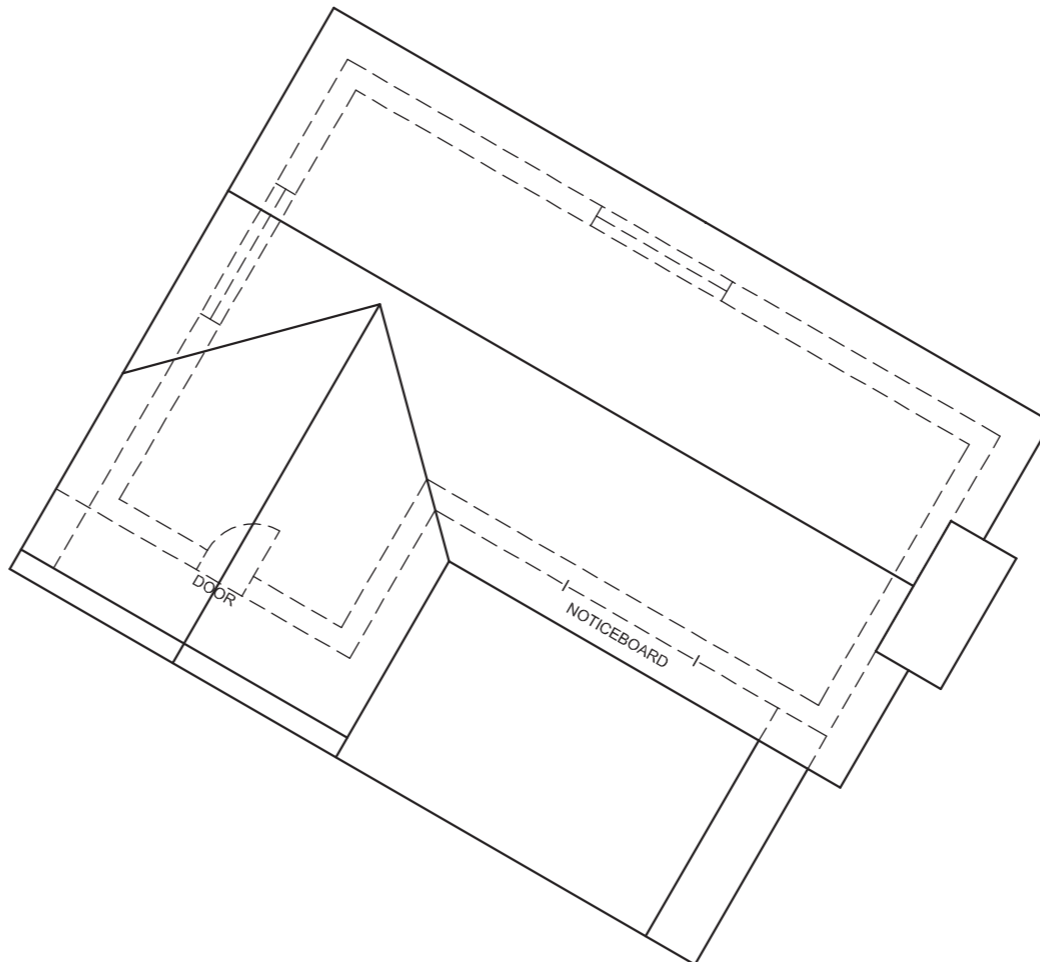
GL



SP



ASSESSMENT CRITERIA			
1. CONSTRUCTION + VPs	7		
2. ROAD	10		
3. HEXAGONAL PILLAR	6		
4. ROUND BASE	13		
TOTAL	36		
EXAMINATION NUMBER			
EXAMINATION NUMBER			
EXAMINATION NUMBER			4



QUESTION 3: PERSPECTIVE

Given:

Three views of a clubhouse and the information needed to draw a two-point perspective drawing

PP - Picture plane

HL - Horizon line

GL - Ground line

SP - Station point

Instructions:

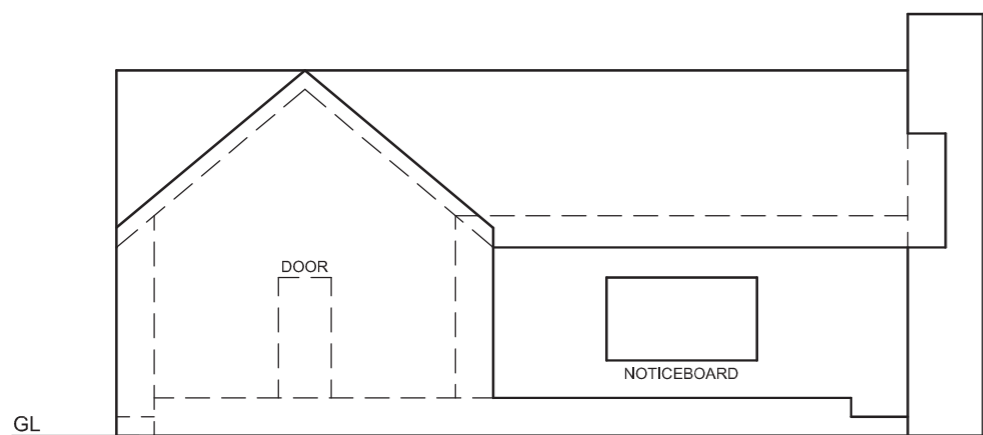
Complete the perspective drawing.

- Align the drawing sheet with the horizon line (HL).
- Locate and label the vanishing points.
- Show ALL necessary construction.
- NO hidden detail is required.

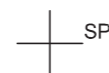
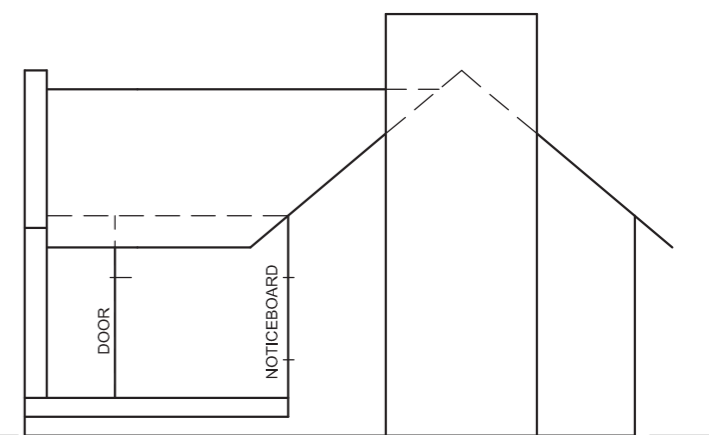
[36]

PP

HL

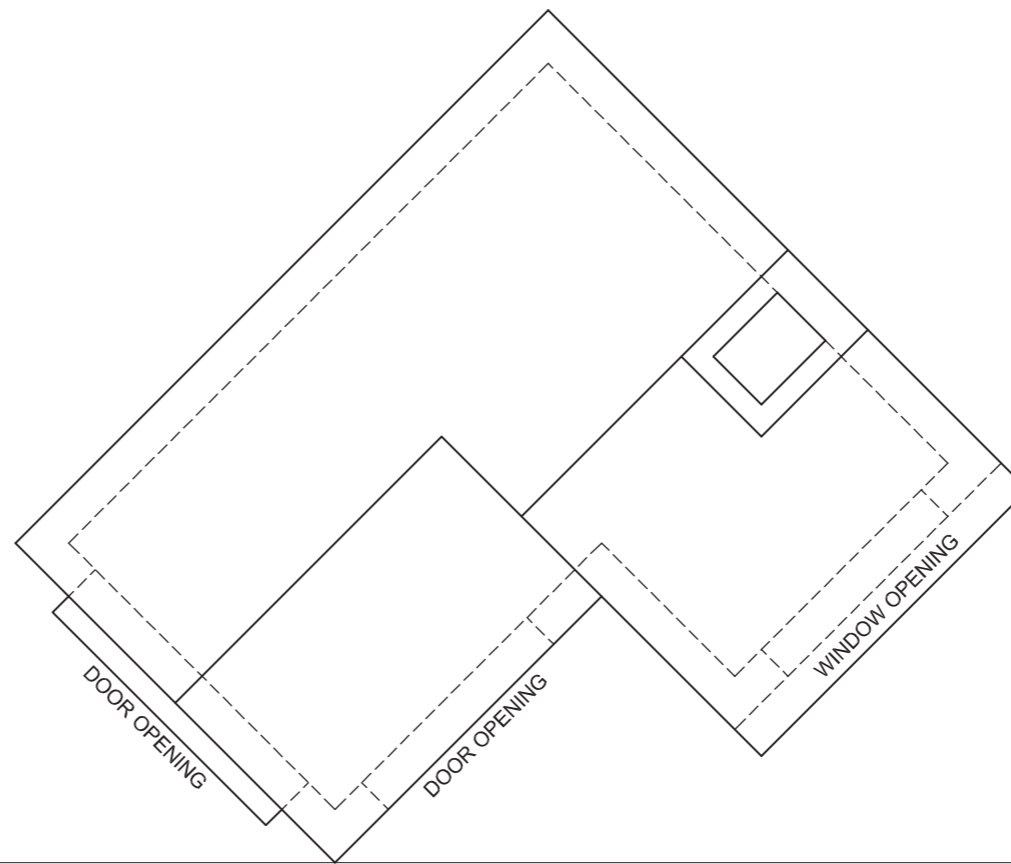


GL



ASSESSMENT CRITERIA			
1. CONSTRUCTION + VPs	7		
2. ROOF	8½		
3. WALLS + WINDOW	15½		
4. CHIMNEY	5		
TOTAL	36		
EXAMINATION NUMBER			
EXAMINATION NUMBER			4





QUESTION 3: PERSPECTIVE

Given:

Two views of a simple building and the information needed to draw a two-point perspective drawing.

PP – Picture Plane

HL – Horizon Line

GL – Ground Line

SP – Station Point

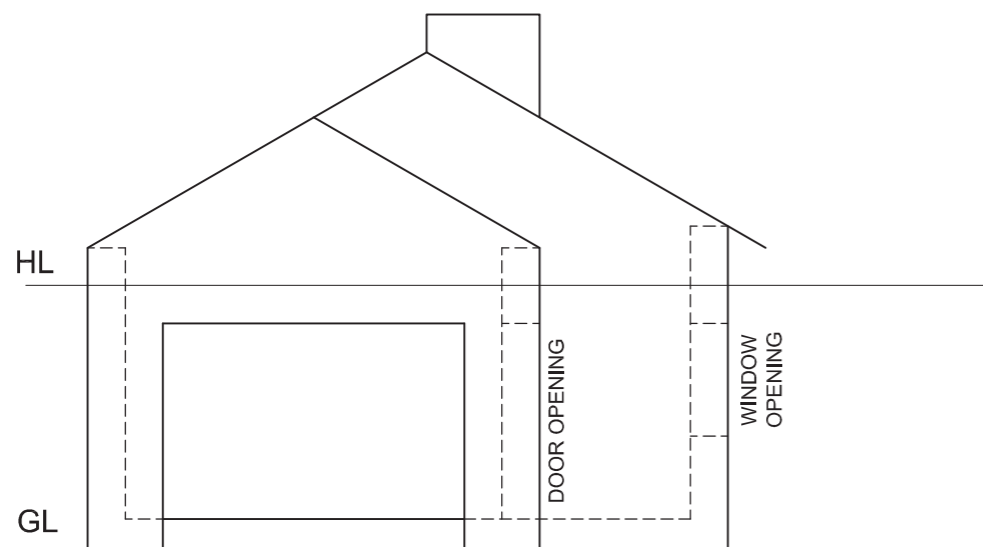
Instructions:

Complete the perspective drawing.

- Align the drawing sheet with the horizon line (HL).
- Locate and label the vanishing points.
- Show ALL visible detail inside the building.
- NO hidden detail is required.
- Show ALL necessary construction.

[39]

PP



HL

+
SP

ASSESSMENT CRITERIA			
CONSTRUCTION + VPs	5		
PART (A)	16½		
PART (B)	6½		
ROOF + CHIMNEY	11		
TOTAL	39		
EXAMINATION NUMBER			
EXAMINATION NUMBER			4



QUESTION 3: PERSPECTIVE

Given:

Two views of a clubhouse with a built-in braai and the information needed to draw a two-point perspective drawing.

PP – Picture Plane

HL – Horizon Line

GL – Ground Line

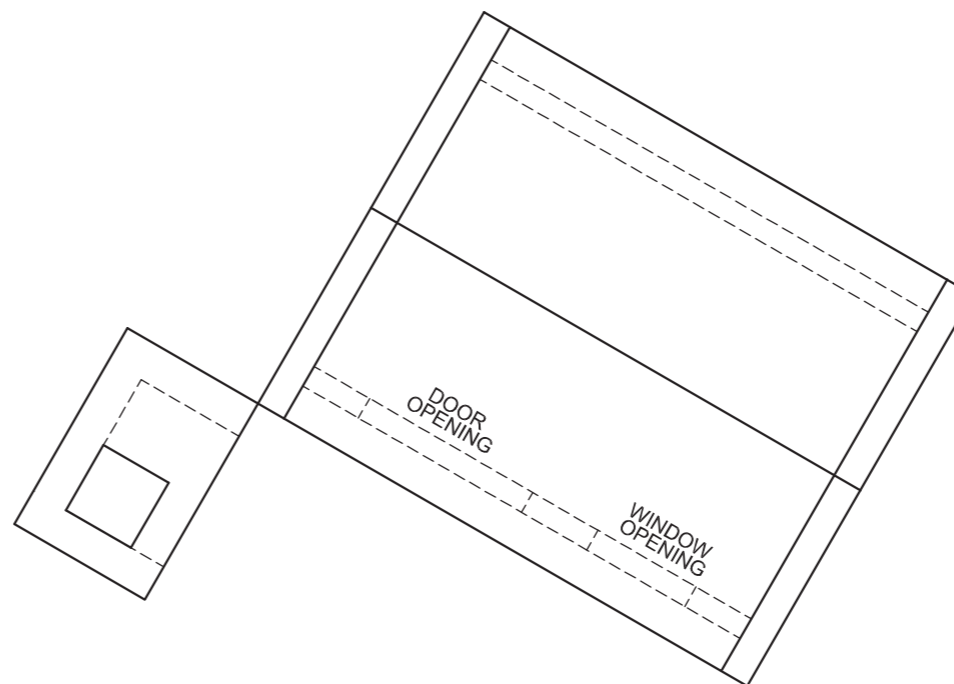
SP – Station Point

Instructions:

Complete the perspective drawing.

- Align the drawing sheet with the horizon line (HL).
- Locate and label the vanishing points.
- Show ALL visible detail inside the dwelling.
- NO hidden detail is required.
- Show ALL necessary constructions.

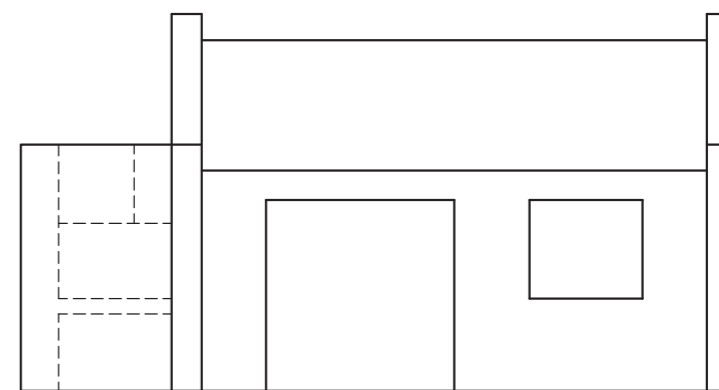
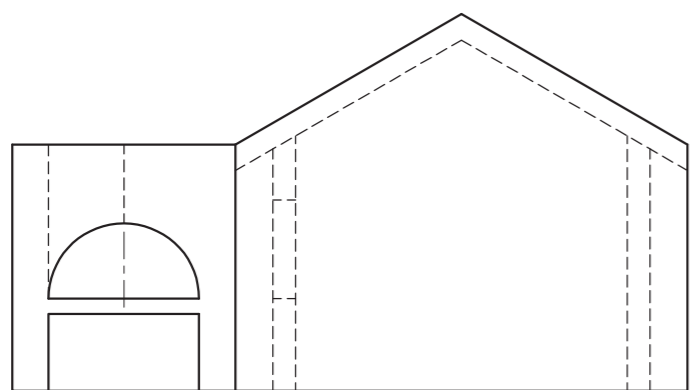
[36]



PP

HL

GL



+
SP

ASSESSMENT CRITERIA			
CONSTRUCTION + VPs	6		
DWELLING (A)	17½		
BRAAI (B)	12½		
TOTAL	36		
EXAMINATION NUMBER			
EXAMINATION NUMBER			4



QUESTION 3: PERSPECTIVE

Given:

Two views of a structure and the information needed to draw a two-point perspective drawing.

PP - Picture Plane

HL - Horizon Line

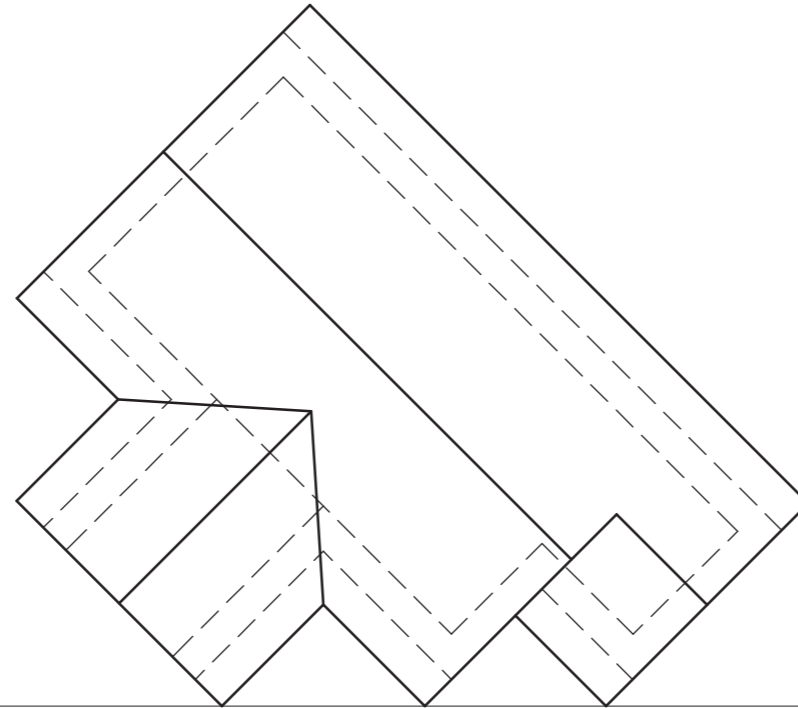
GL - Ground Line

SP - Station Point

Instructions:

3.1 Complete the perspective drawing.

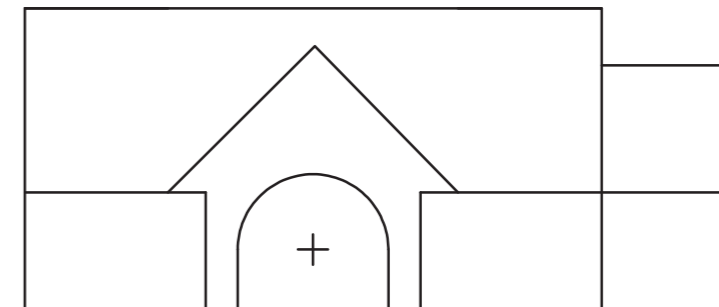
- Locate and label the vanishing points.
- NO hidden detail is required.
- Show ALL necessary construction.
- Align the drawing sheet with the horizon line (HL). **[39]**



PP

HL

GL



⊗ SP

ASSESSMENT CRITERIA

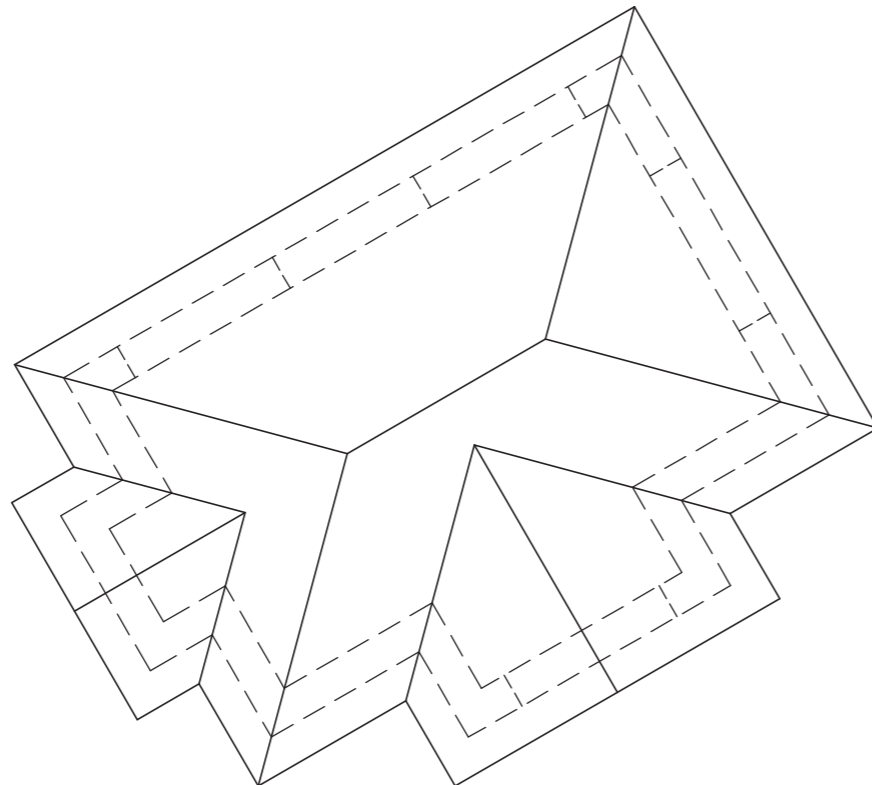
CONSTRUCTION	4
FIND AND LABEL VP's	4
CIRCLE + CONSTRUCTION	8
ROOF	14
WALLS, DOOR	9
TOTAL	39

EXAMINATION NUMBER

EXAMINATION NUMBER

4

STAPLE



QUESTION 3: PERSPECTIVE

Given:

Two views of a structure and the information needed to draw a two-point perspective drawing.

PP - Picture Plane

HL - Horizon Line

GL - Ground Line

SP - Station Point

Instructions:

- Locate and label the vanishing points.
- Complete the perspective drawing.
- Show ALL necessary construction.
- Show depth and internal features.

NOTE:

- Align drawing sheet with the horizon line (HL).
- NO hidden detail is required.

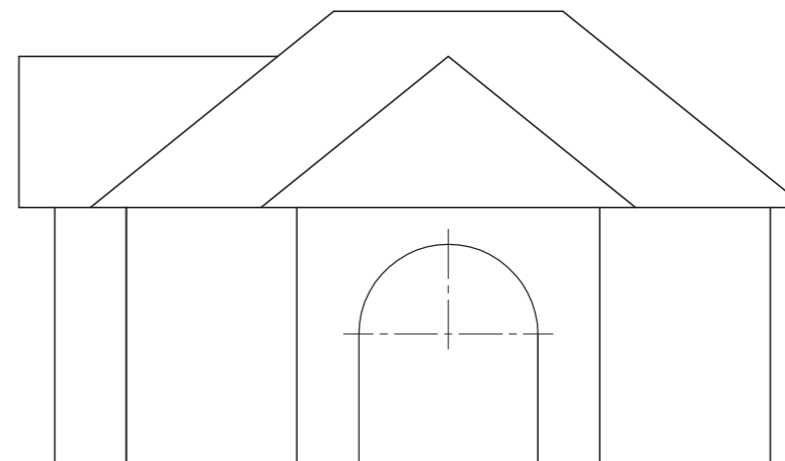
[43]

PP

HL

GL

+
SP



ASSESSMENT CRITERIA

CONSTRUCTION	6
LABEL THE VPs	2
CIRCLE CONSTRUCTION	3
ROOF	10
WALLS, DOOR	22
TOTAL	43

EXAMINATION NUMBER

EXAMINATION NUMBER

4